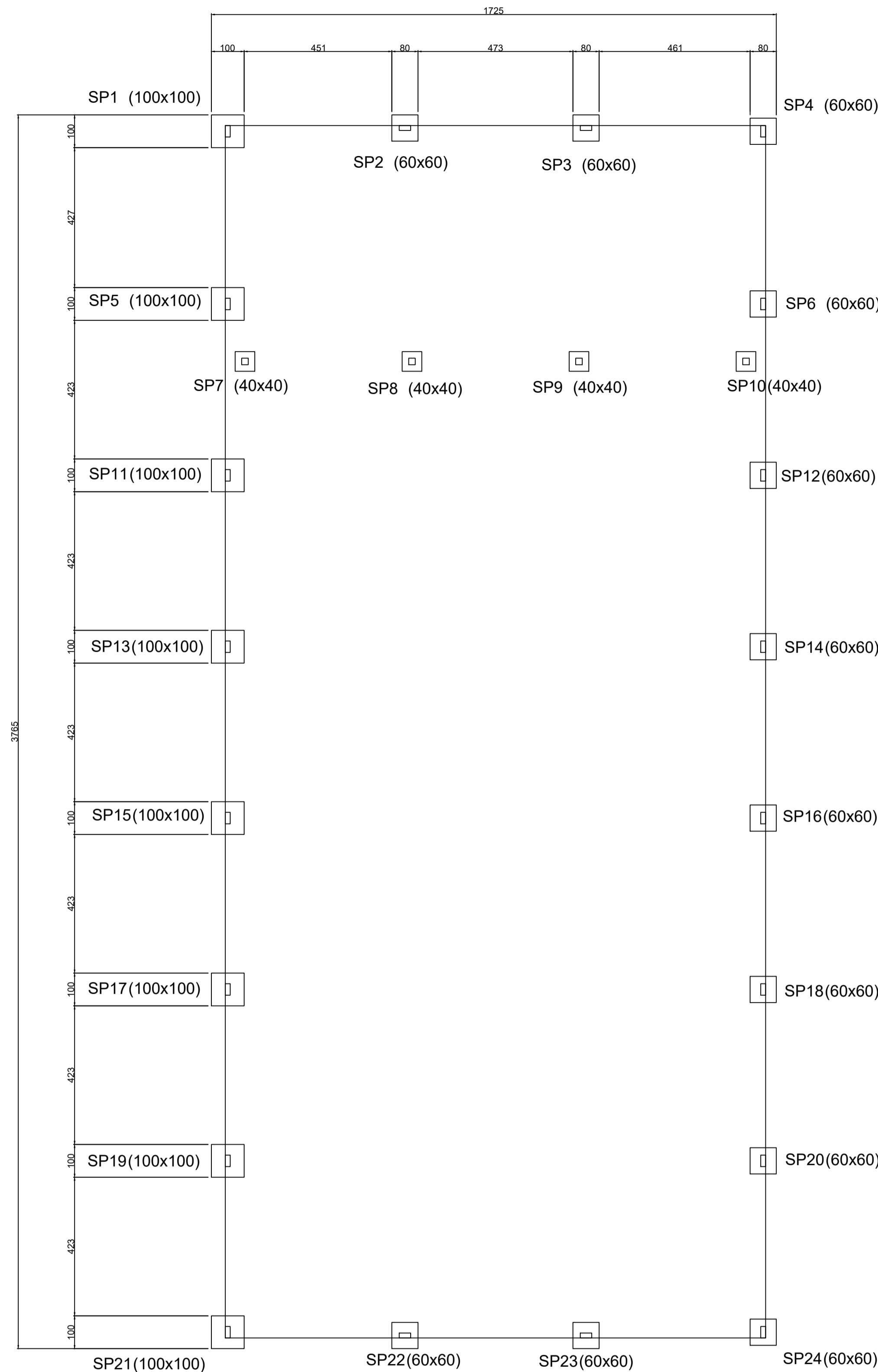
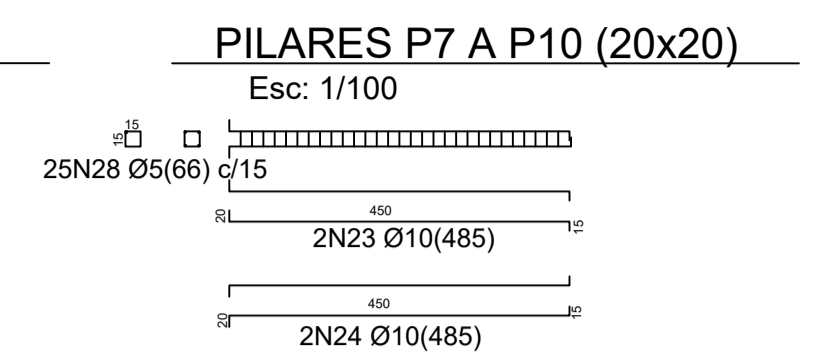
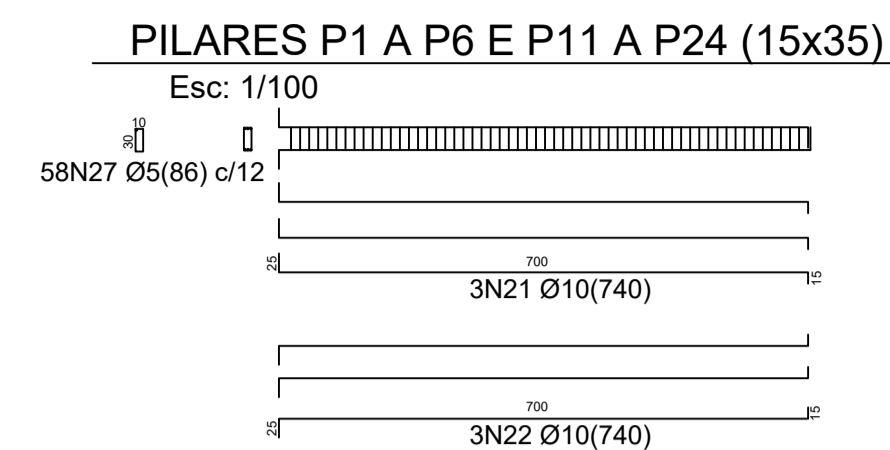


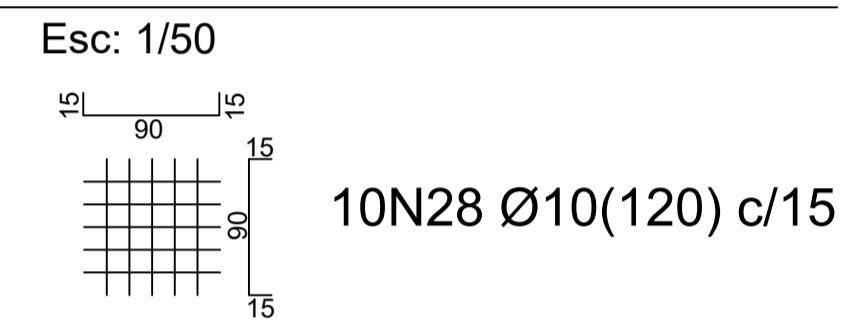
**PLANTA BAIXA - LOCAÇÃO DOS PILARES**  
Esc: 1/100



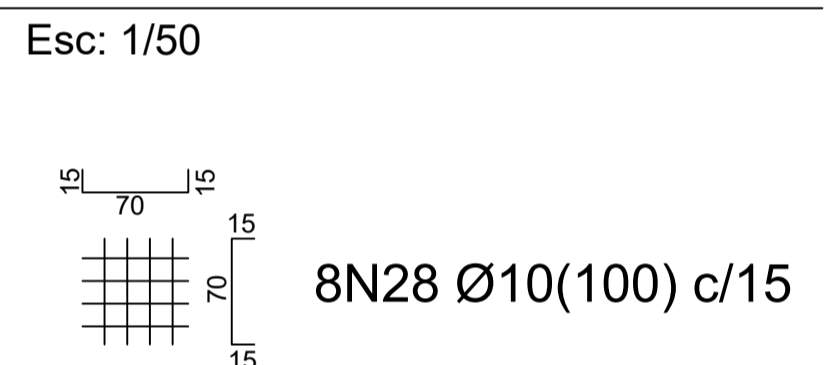
**PLANTA BAIXA - LOCAÇÃO DAS SAPATAS**  
Esc: 1/100



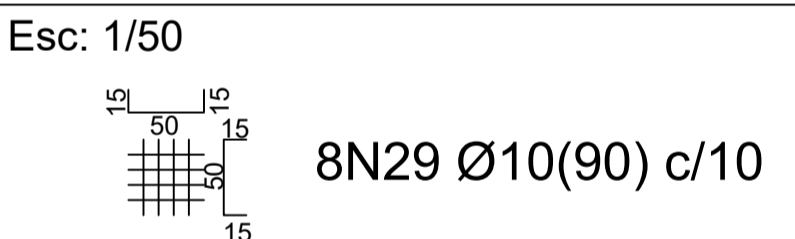
**SAPATAS (100x100) SP1, SP5, SP11, SP13, SP15, SP17, SP19, SP21**



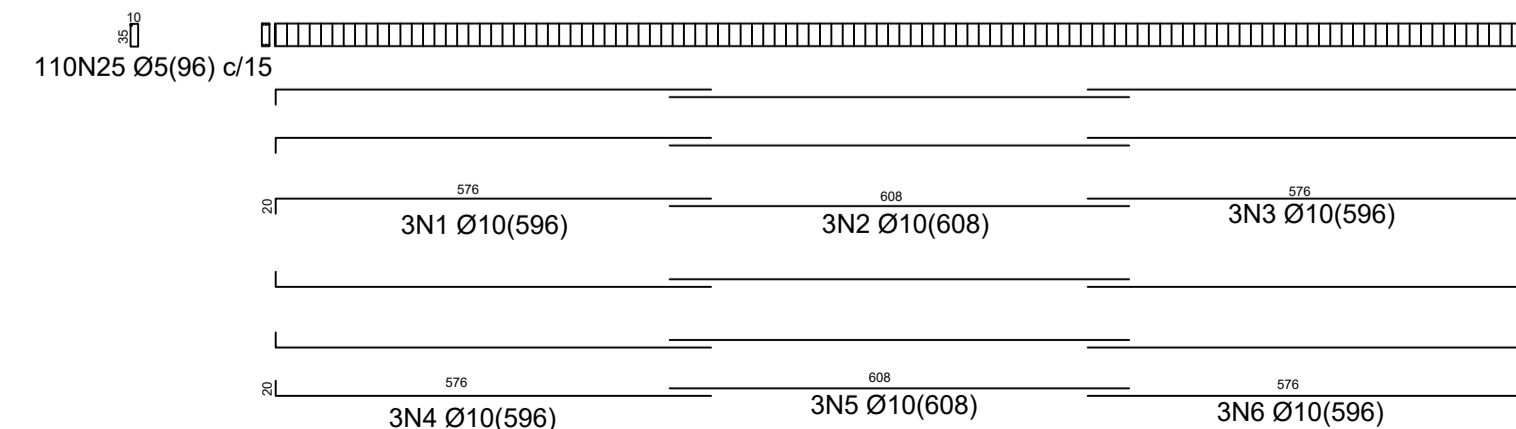
**SAPATAS (80x80) SP2, SP3, SP4, SP6, SP12, SP14, SP16, SP18, SP20, SP22, SP23, SP24**



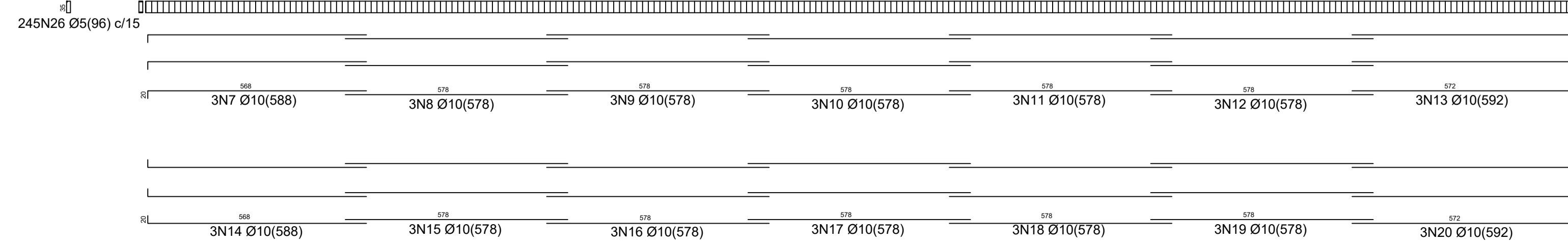
**SAPATAS (60x60) SP7, SP8, SP9, SP10**



**VIGAS FRONTAL E FUNDOS (40x15)**  
Esc: 1/100



**VIGAS LATERIAS (40x15)**  
Esc: 1/100



**Projeto Estrutural**

TÍTULO: Projeto Estrutural e Detalhamento  
RESPONSÁVEL TÉCNICO: Cleiton Gasperin  
PROPRIETÁRIO: Prefeitura de Santa Rosa de Lima - SC  
ASSUNTO: Projeto Estrutural e Detalhamento Estrutural