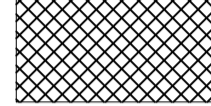
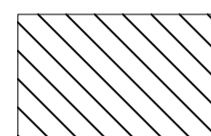
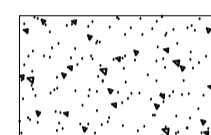
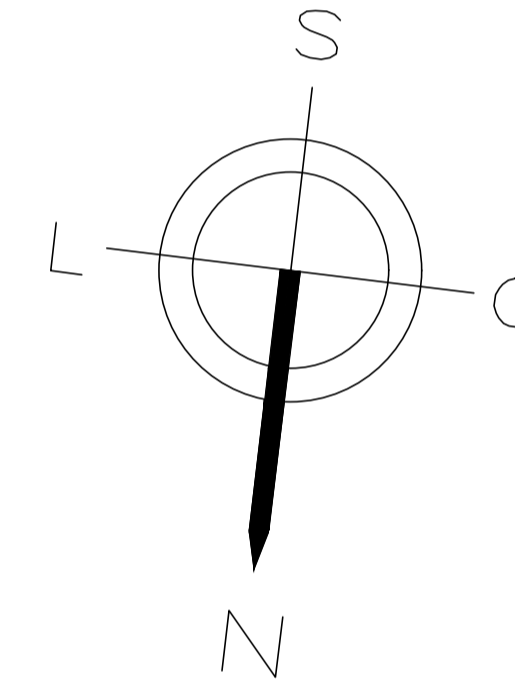
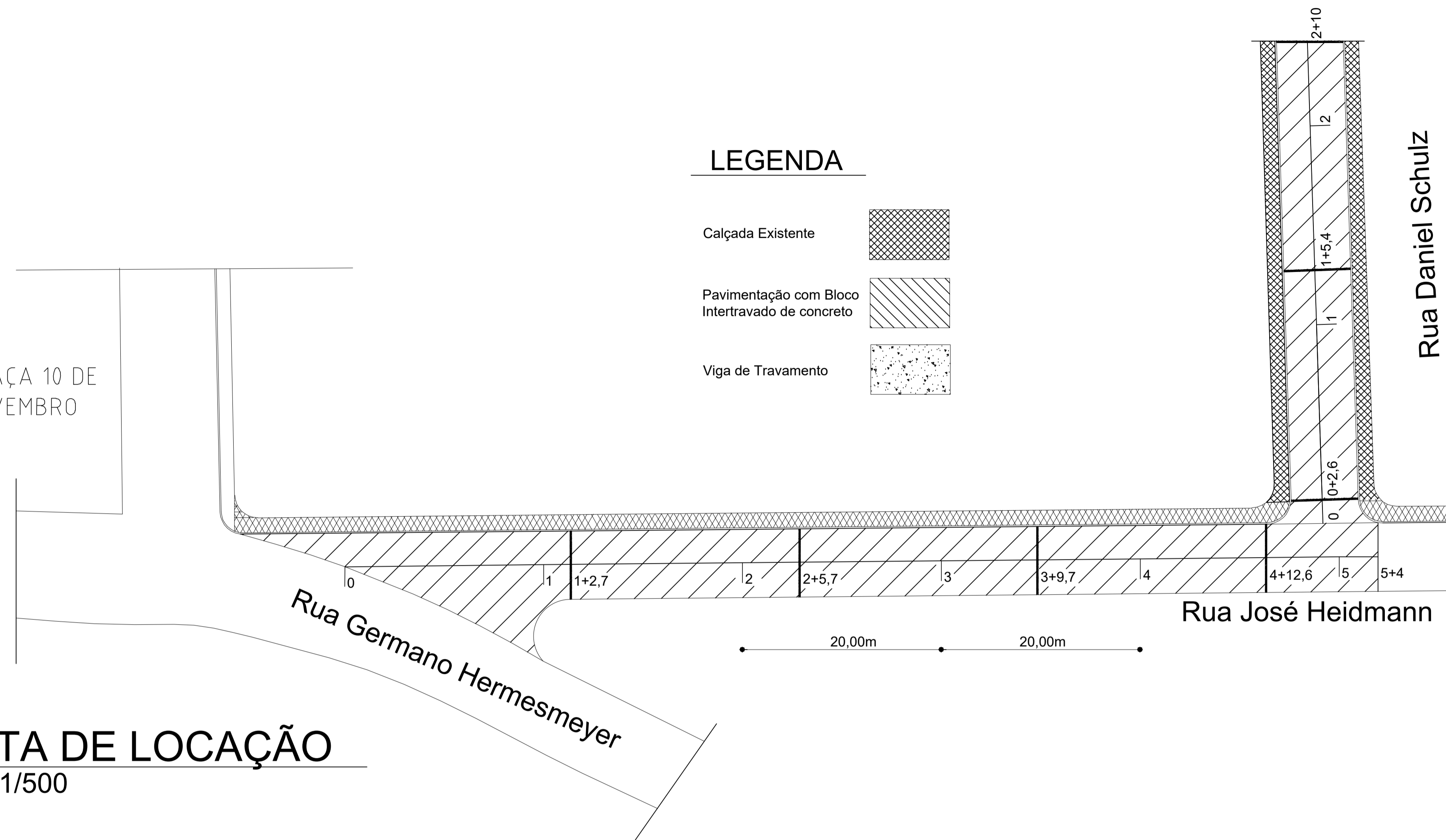


PRAÇA 10 DE NOVEMBRO

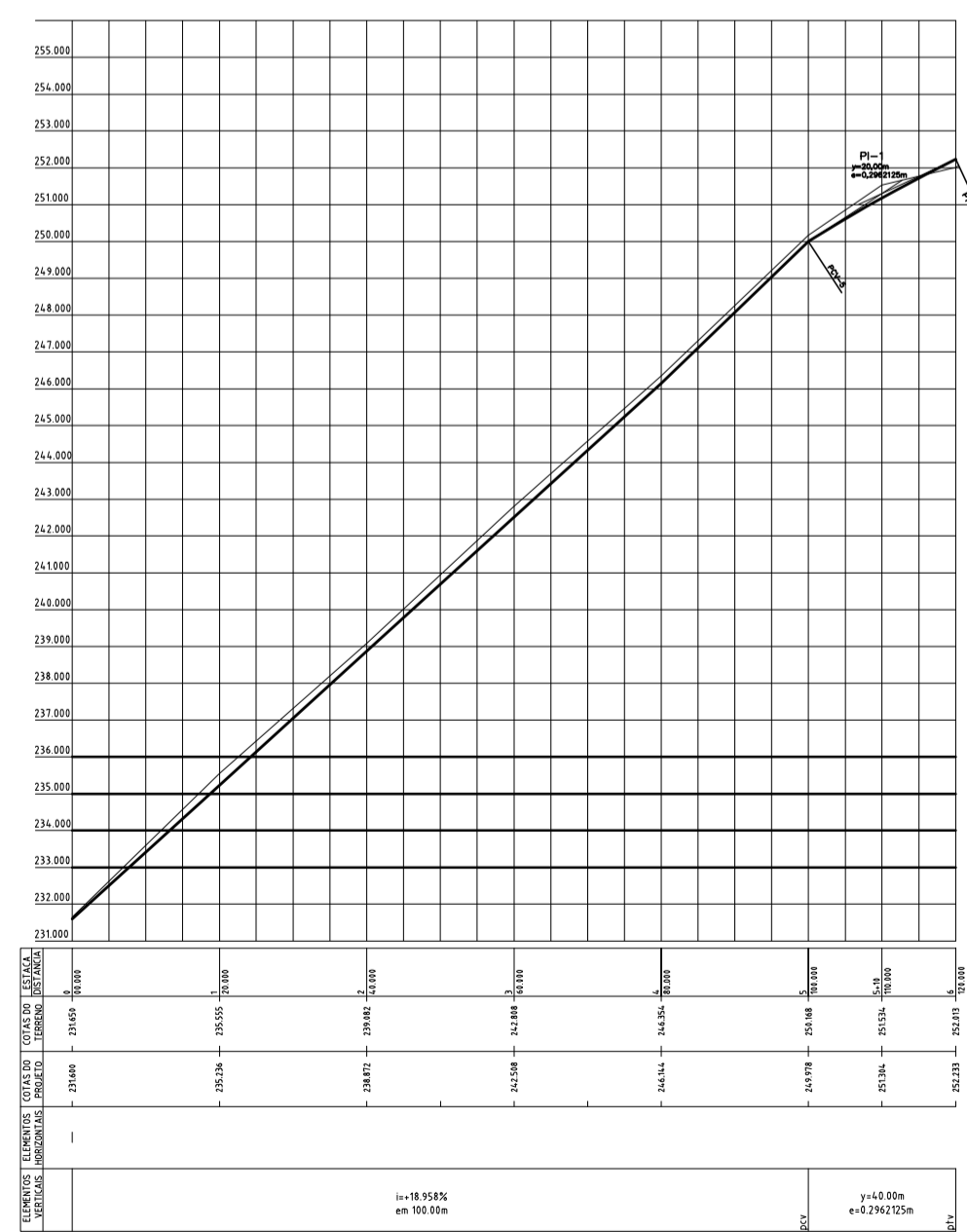
LEGENDA

- Calçada Existente 
- Pavimentação com Bloco Intertravado de concreto 
- Viga de Travamento 

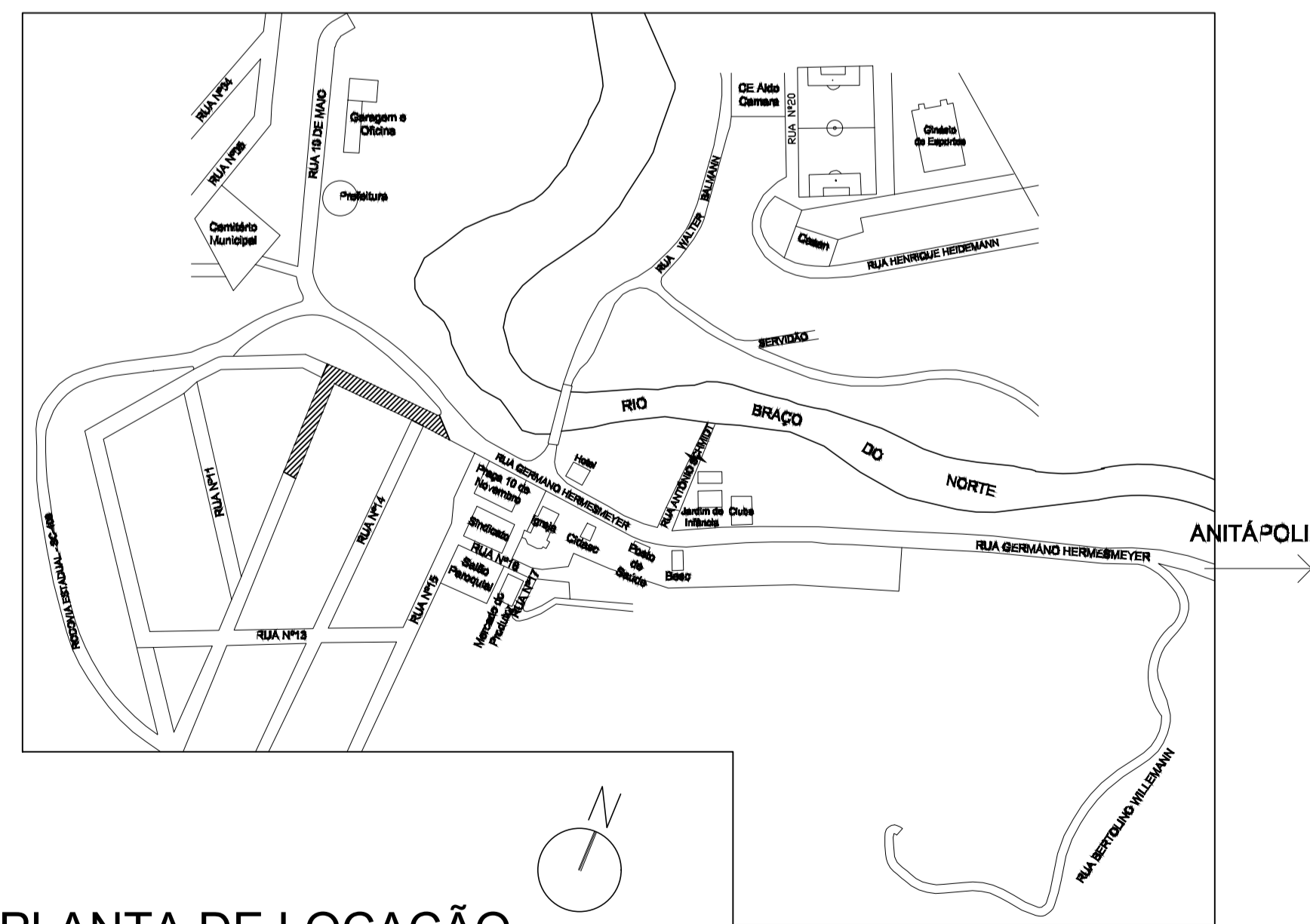


PLANTA DE LOCAÇÃO

Escala: 1/500



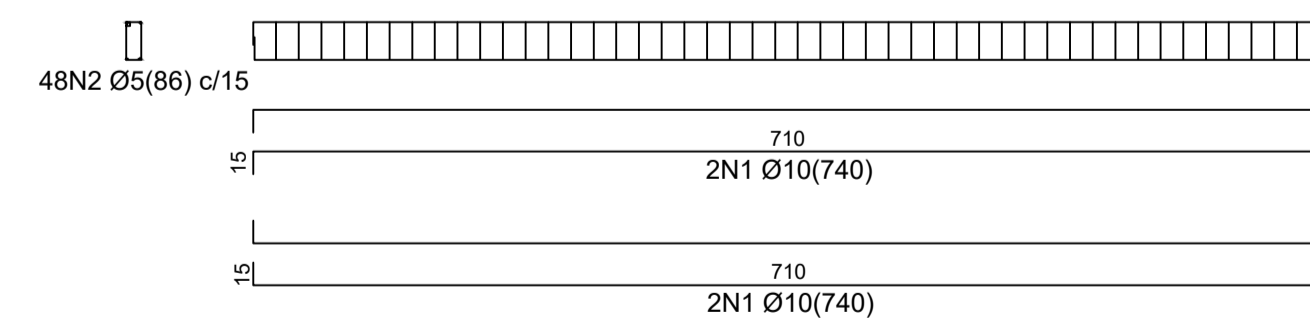
PERFIL LONGITUDINAL PRJETO GEOMÉTRICO
Escala: H: 1/1000 V: 1/50



PLANTA DE LOCAÇÃO
Escala: 1/500

VIGAS DE TRAVAMENTO (30x15)

Esc: 1/100



Projeto Básico

TÍTULO:	Projeto de Pavimentação	FOLHA:	01
RESPONSÁVEL TÉCNICO:	Cleiton Gasperin	DATA:	10/05/2021
PROPRIETÁRIO:	Prefeitura de Santa Rosa de Lima - SC	ESCALA:	1:50
ASSUNTO:	Projeto de Pavimentação Detalhamento		