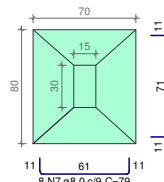
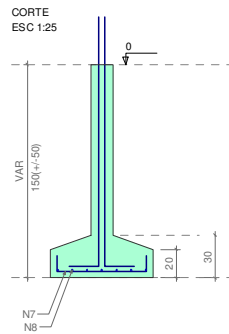


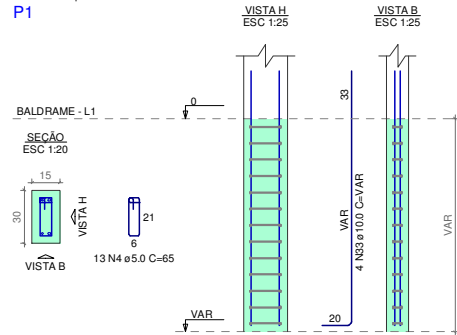
Estrutural Capela  
**S1=S14=S17**  
 PLANTA  
 ESC 1:25



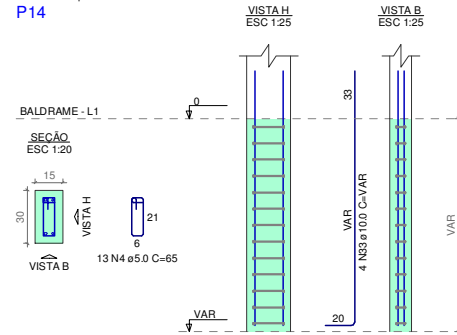
Solo com capacidade de suporte > 0.90 kgf/cm<sup>2</sup>  
 Solo compactado sobre a sapata  
 peso específico > 1600.00 kg/m<sup>3</sup>



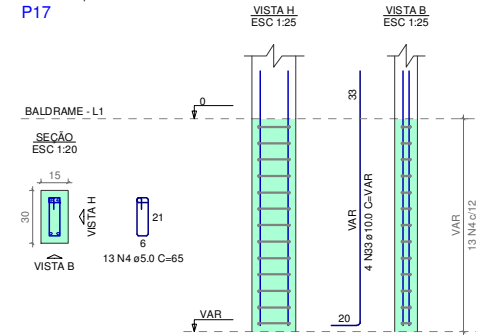
Estrutural Capela  
**P1**



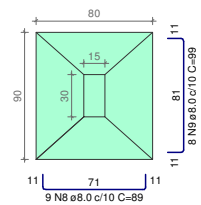
Estrutural Capela  
**P14**



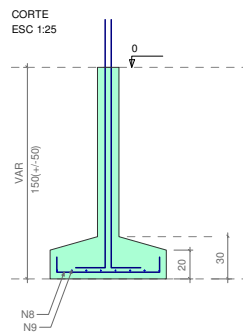
Estrutural Capela  
**P17**



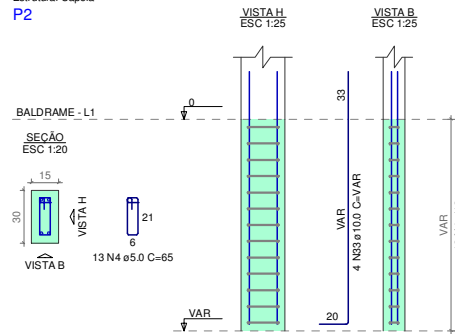
Estrutural Capela  
**S2=S5=S9**  
 PLANTA  
 ESC 1:25



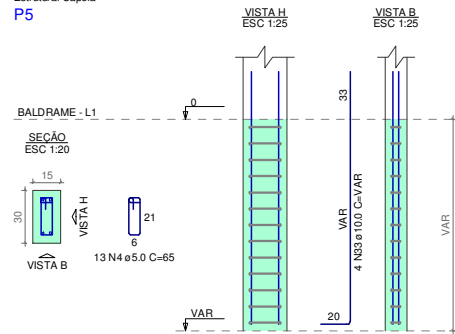
Solo com capacidade de suporte > 0.90 kgf/cm<sup>2</sup>  
 Solo compactado sobre a sapata  
 peso especifico > 1600.00 kg/m<sup>3</sup>



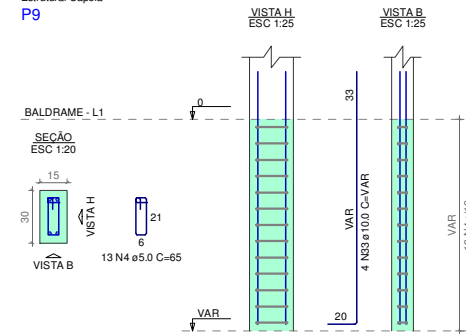
Estrutural Capela  
**P2**



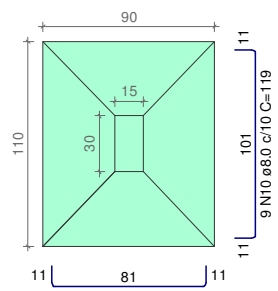
Estrutural Capela  
**P5**



Estrutural Capela  
**P9**

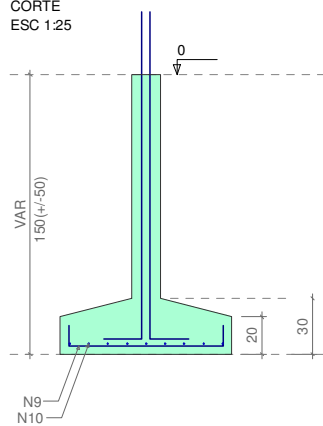


Estrutural Capela  
**S3=S8**  
 PLANTA  
 ESC 1:25



Solo com capacidade de suporte > 0.90 kgf/cm<sup>2</sup>  
 Solo compactado sobre a sapata  
 peso específico > 1600.00 kgf/m<sup>3</sup>

CORTE  
 ESC 1:25

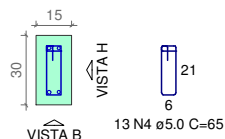


Estrutural Capela  
**P3**

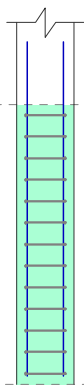
**P3**

BALDRAME - L1

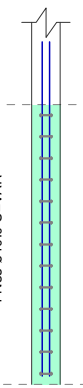
SECÃO  
 ESC 1:20



VISTA H.  
 ESC 1:25



VISTA B.  
 ESC 1:25

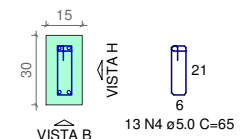


Estrutural Capela  
**P8**

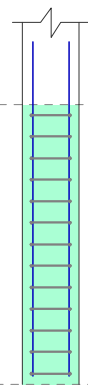
**P8**

BALDRAME - L1

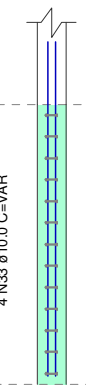
SECÃO  
 ESC 1:20



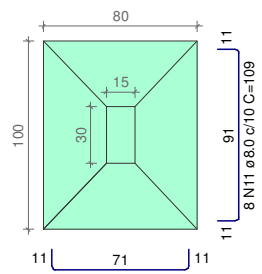
VISTA H.  
 ESC 1:25



VISTA B.  
 ESC 1:25

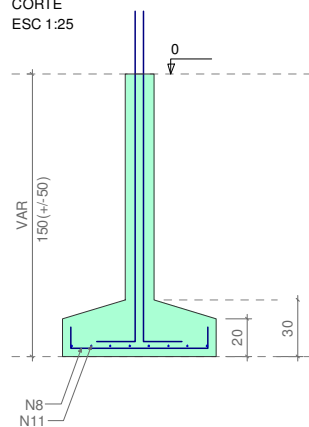


Estrutural Capela  
**S4=S11**  
 PLANTA  
 ESC 1:25



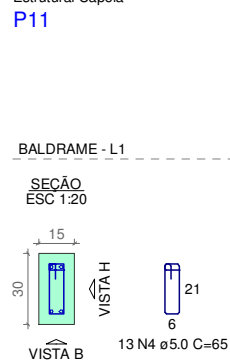
Solo com capacidade de suporte > 0.90 kgf/cm<sup>2</sup>  
 Solo compactado sobre a sapata  
 peso específico > 1600.00 kgf/m<sup>3</sup>

CORTE  
 ESC 1:25



Estrutural Capela  
**P11**

P11



VISTA H  
 ESC 1:25

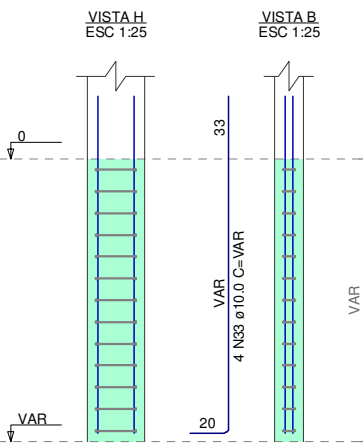
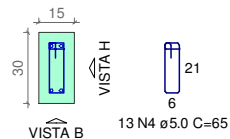
VISTA H  
 ESC 1:25

VISTA B  
 ESC 1:25

VISTA B  
 ESC 1:25

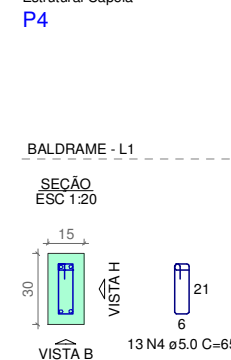
BALDRAME - L1

SEÇÃO  
 ESC 1:20



Estrutural Capela  
**P4**

P4



VISTA H  
 ESC 1:25

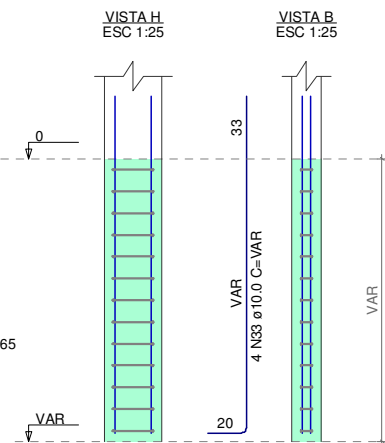
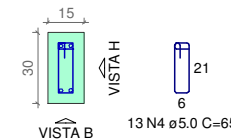
VISTA H  
 ESC 1:25

VISTA B  
 ESC 1:25

VISTA B  
 ESC 1:25

BALDRAME - L1

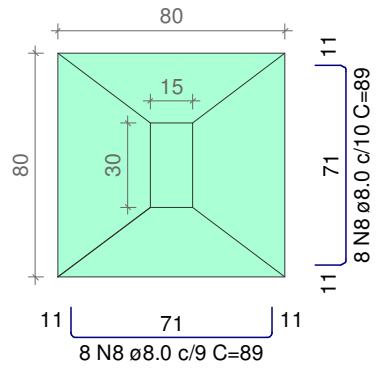
SEÇÃO  
 ESC 1:20



Estrutural Capela

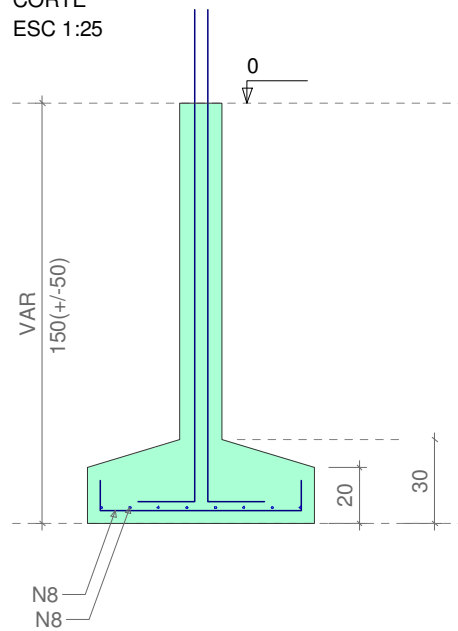
**S6**

PLANTA  
ESC 1:25



Solo com capacidade de suporte > 0.90 kgf/cm<sup>2</sup>  
Solo compactado sobre a sapata  
peso específico > 1600.00 kgf/m<sup>3</sup>

CORTE  
ESC 1:25

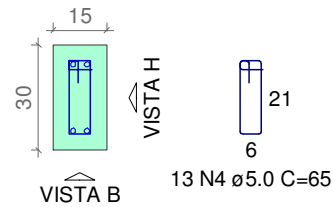


Estrutural Capela

**P6**

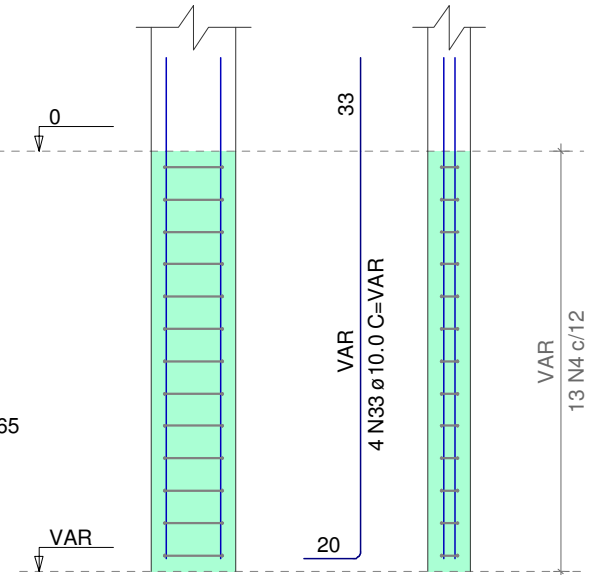
BALDRAME - L1

SEÇÃO  
ESC 1:20



VISTA H  
ESC 1:25

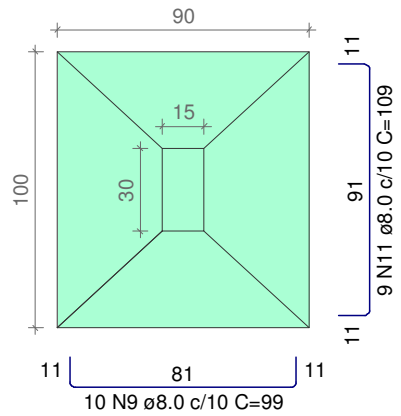
VISTA B  
ESC 1:25



Estrutural Capela

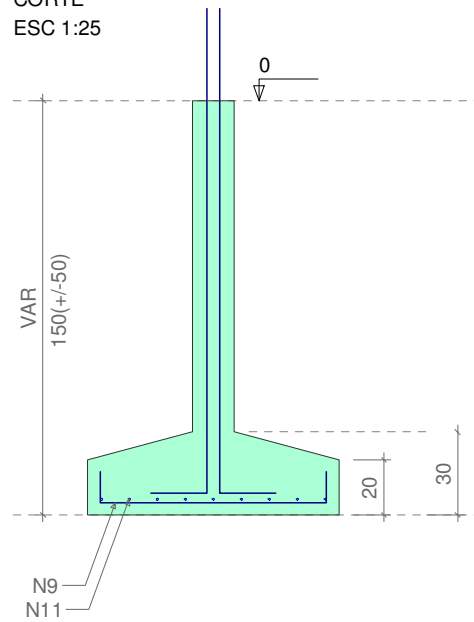
**S7**

PLANTA  
ESC 1:25



Solo com capacidade de suporte > 0.90 kgf/cm<sup>2</sup>  
Solo compactado sobre a sapata  
peso específico > 1600.00 kgf/m<sup>3</sup>

CORTE  
ESC 1:25

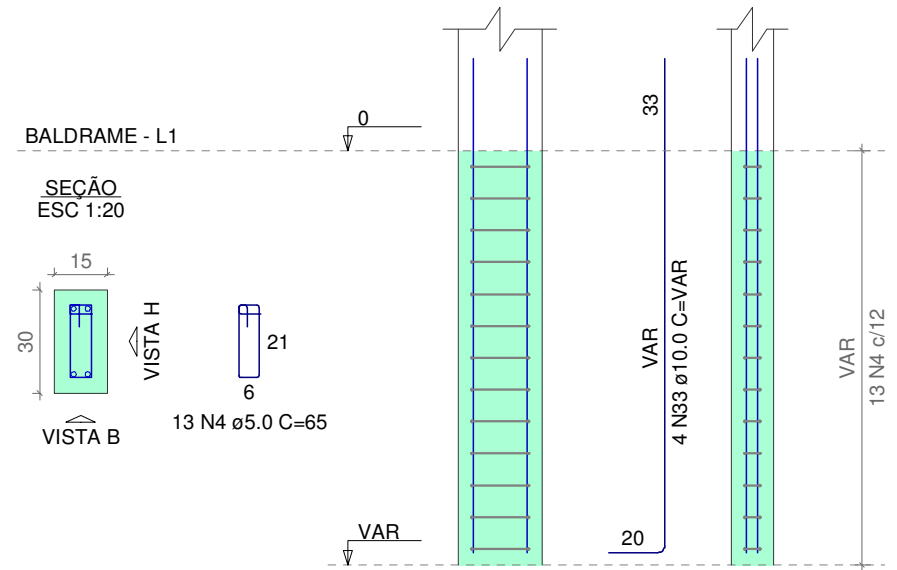


Estrutural Capela

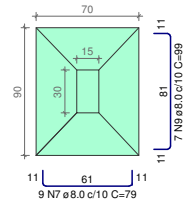
**P7**

VISTA H  
ESC 1:25

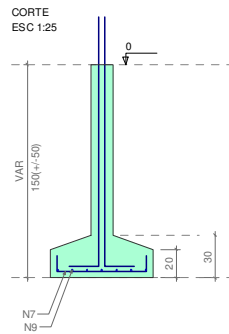
VISTA B  
ESC 1:25



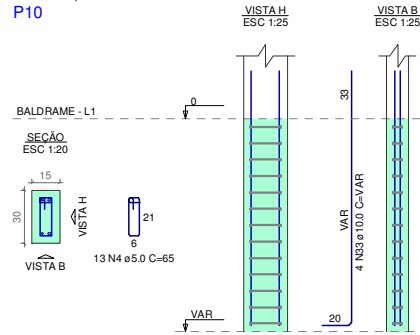
Estrutural Capela  
**S10=S12=S13**  
 PLANTA  
 ESC 1:25



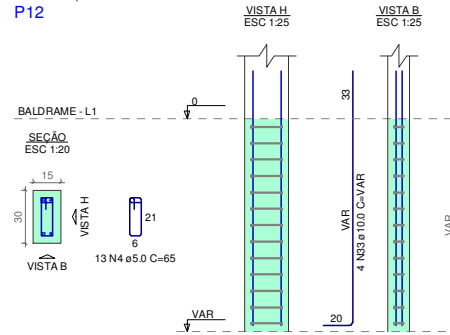
9 N7 ø8.0 c/10 C=79  
 Solo com capacidade de suporte > 0.90 kgf/cm²  
 Solo compactado sobre a sapata  
 peso específico > 1600.00 kg/m³



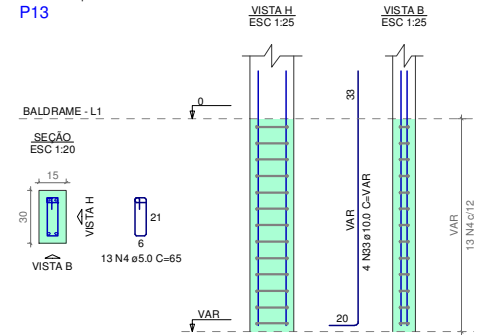
Estrutural Capela  
**P10**



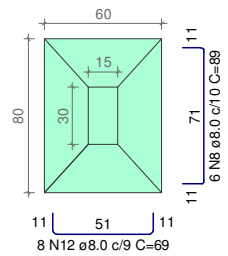
Estrutural Capela  
**P12**



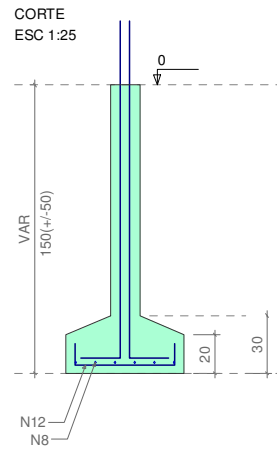
Estrutural Capela  
**P13**



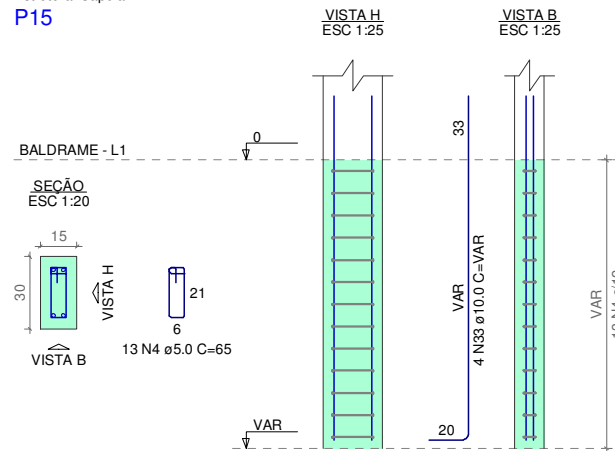
Estrutural Capela  
**S15=S16**  
 PLANTA  
 ESC 1:25



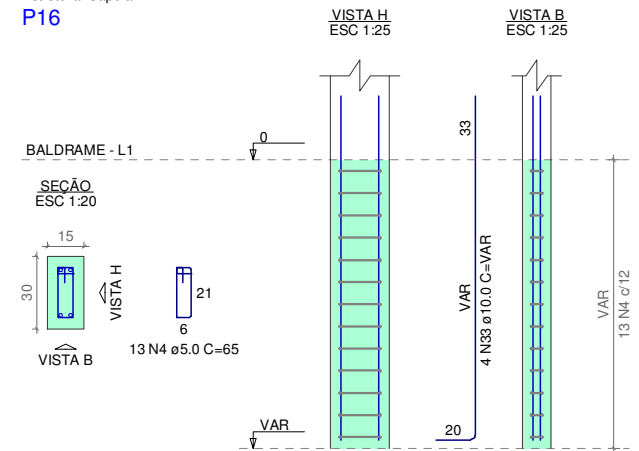
Solo com capacidade de suporte > 0.90 kgf/cm<sup>2</sup>  
 Solo compactado sobre a sapata  
 peso específico > 1600.00 kgf/m<sup>3</sup>



Estrutural Capela  
**P15**



Estrutural Capela  
**P16**



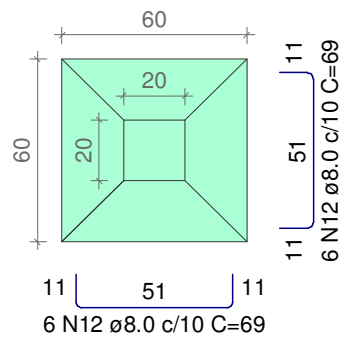


Estrutural Capela

**S18=S19**

PLANTA

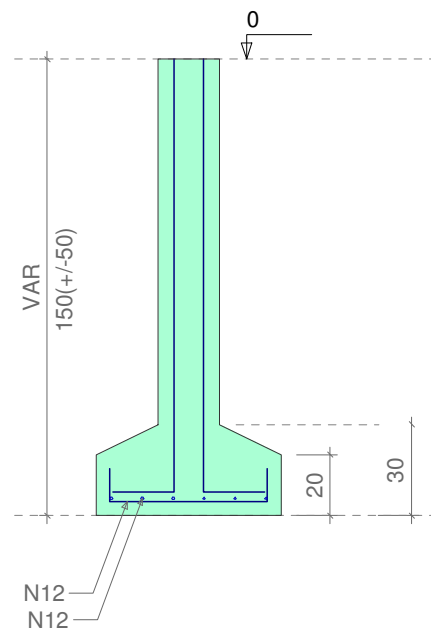
ESC 1:25



Solo com capacidade de suporte > 1.50 kgf/cm<sup>2</sup>

Solo compactado sobre a sapata  
peso específico > 1600.00 kgf/m<sup>3</sup>

CORTE  
ESC 1:25

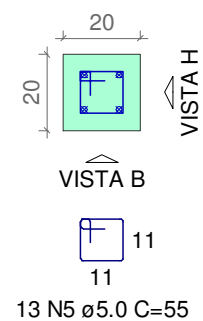


Estrutural Capela

**P18=P19**

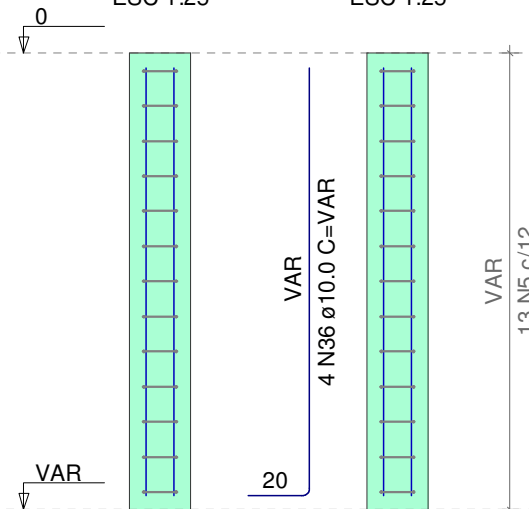
BALDRAME - L1

SEÇÃO  
ESC 1:20



VISTA H  
ESC 1:25

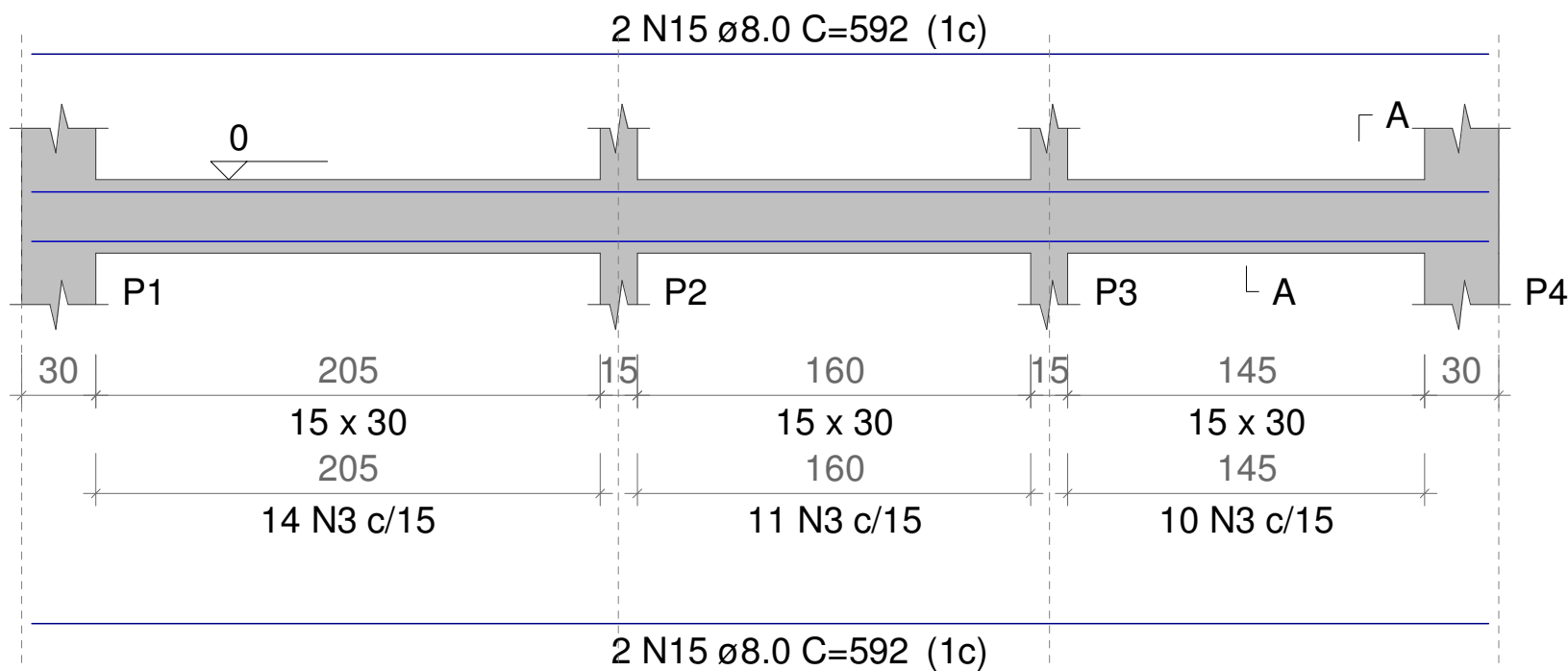
VISTA B  
ESC 1:25



Estrutural Capela  
baldrame

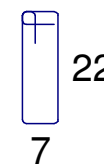
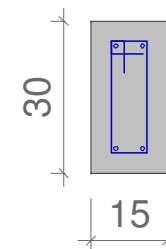
V1

ESC 1:50



SEÇÃO A-A

ESC 1:25



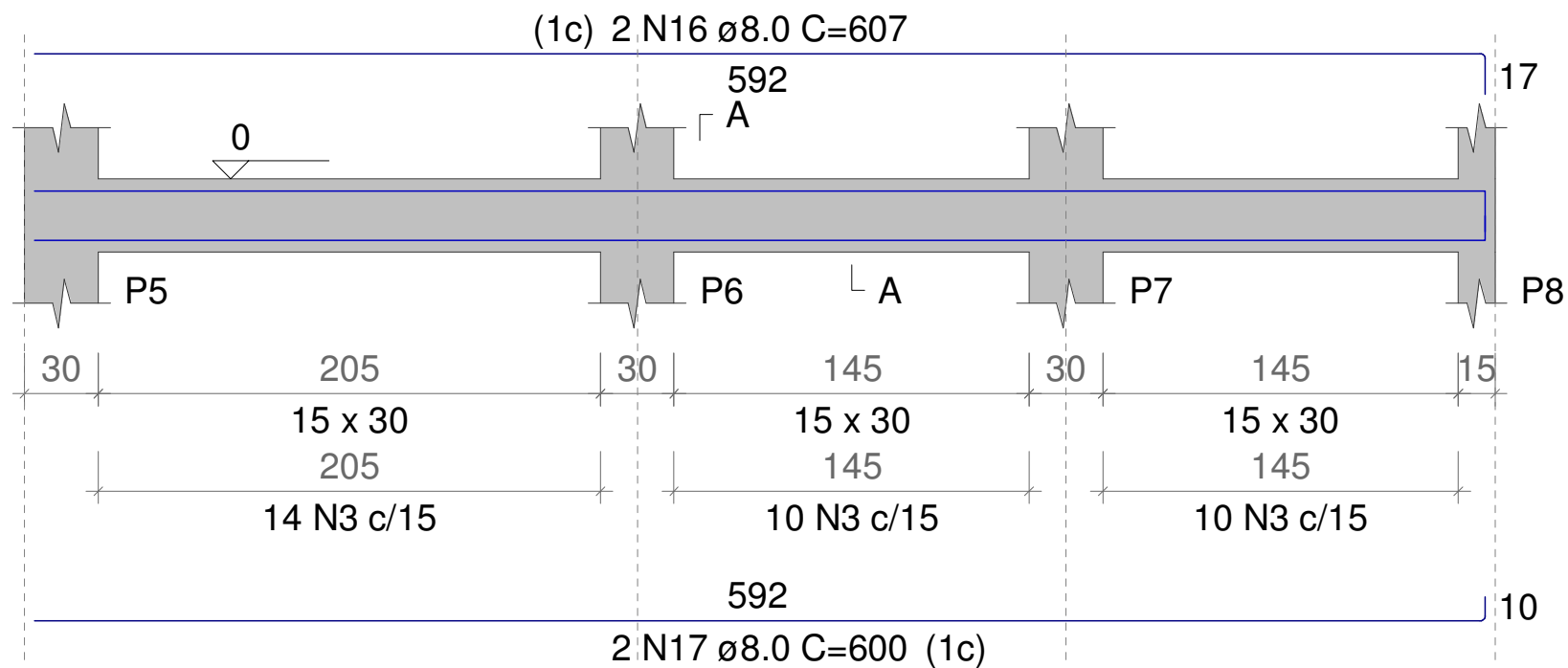
35 N3 ø5.0 C=69

Estrutural Capela

baldrame

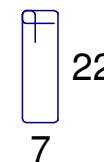
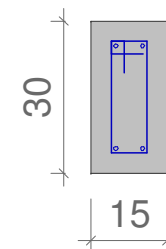
V2

ESC 1:50



SEÇÃO A-A

ESC 1:25



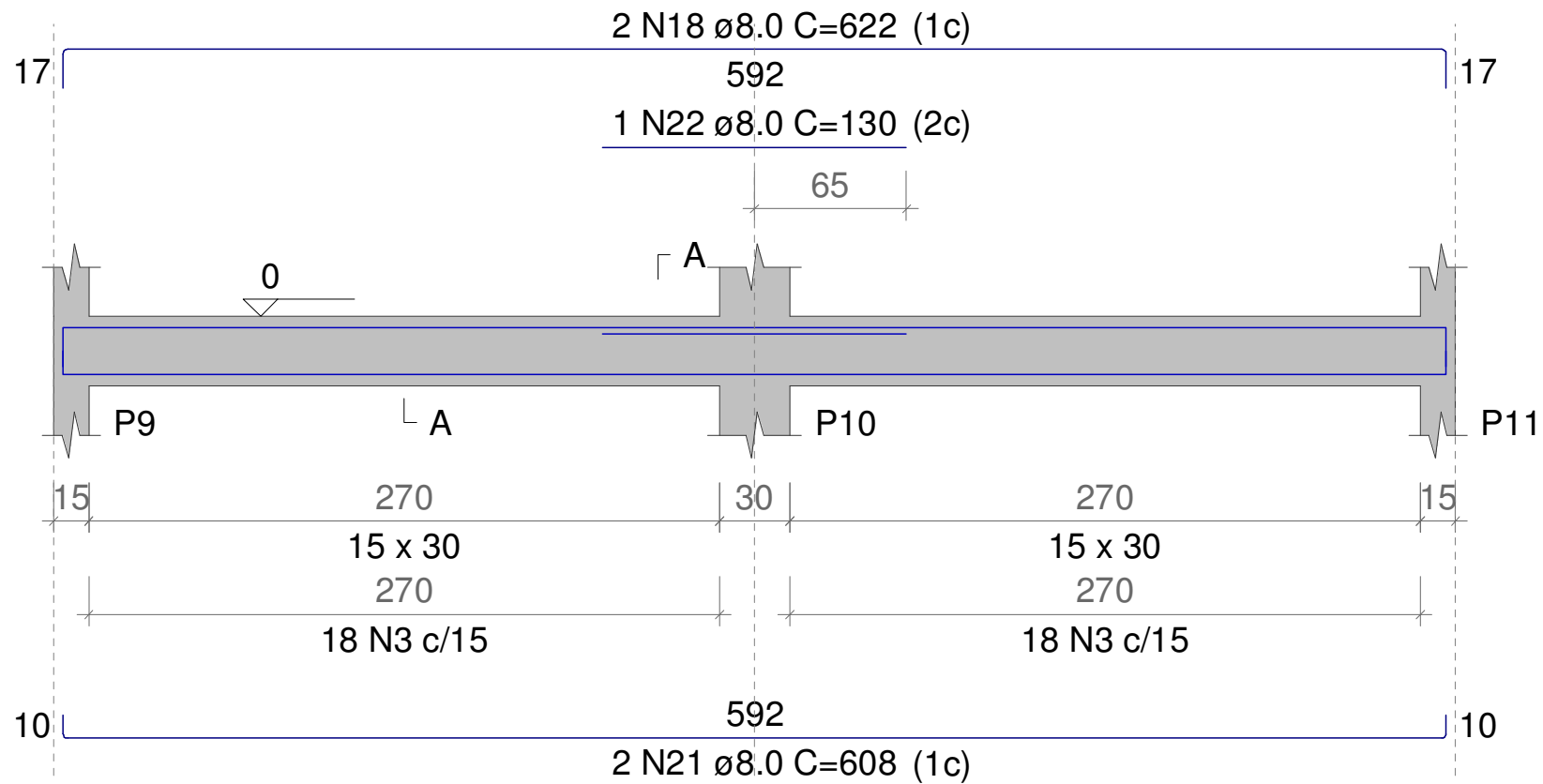
34 N3  $\varnothing$ 5.0 C=69

Estrutural Capela

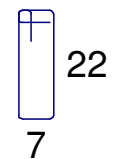
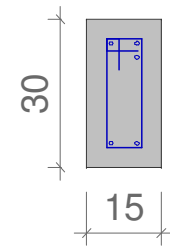
baldrame

V3

ESC 1:50



SEÇÃO A-A  
ESC 1:25



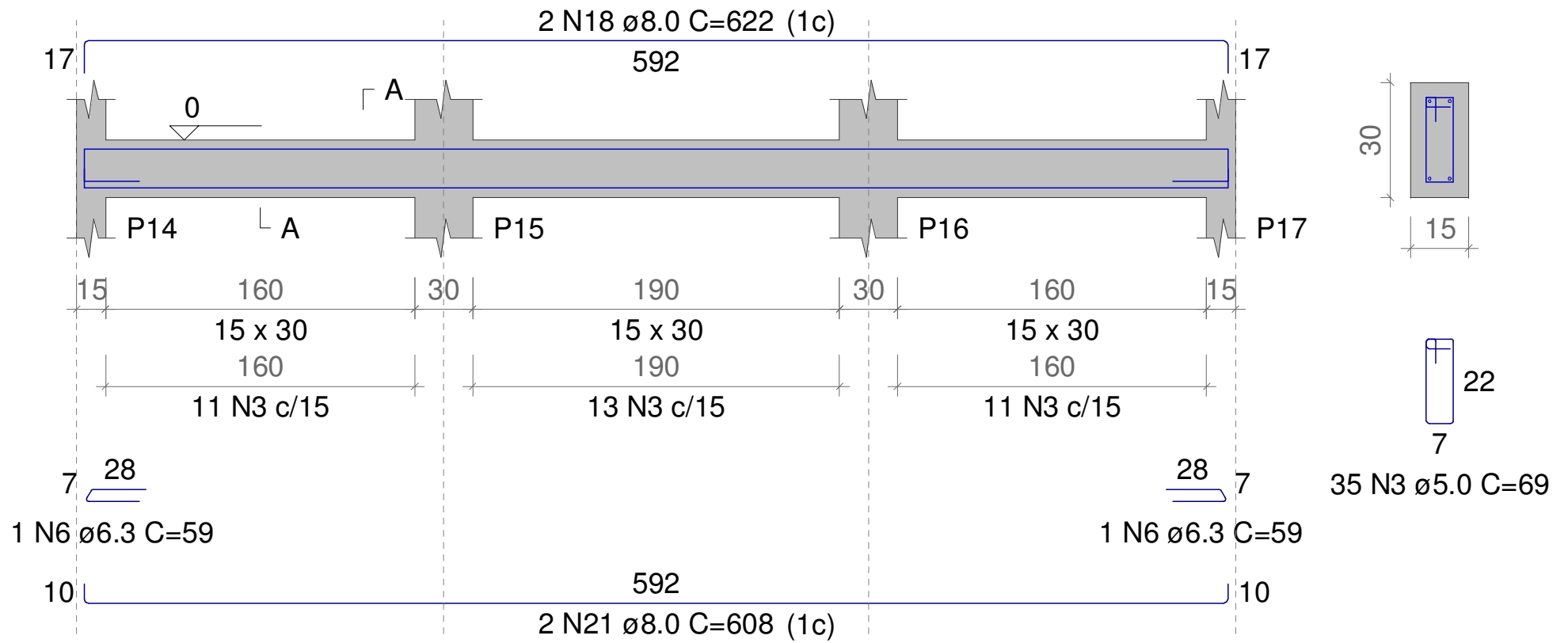
36 N3  $\varnothing$ 5.0 C=69

Estrutural Capela  
baldrame

V4

ESC 1:50

SEÇÃO A-A  
ESC 1:25

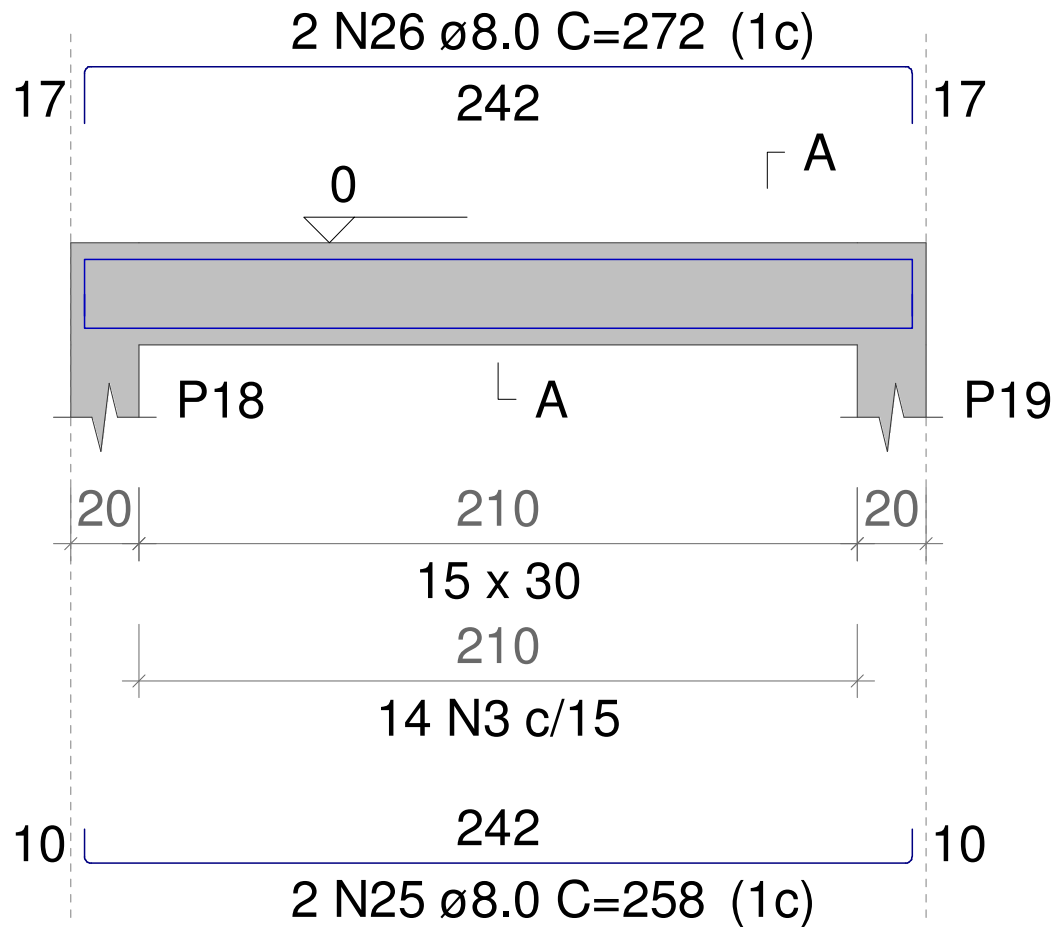


Estrutural Capela

baldrame

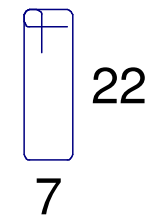
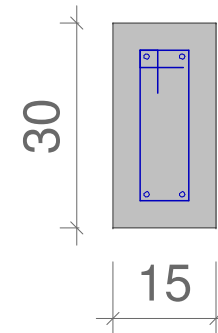
V5

ESC 1:50



SEÇÃO A-A

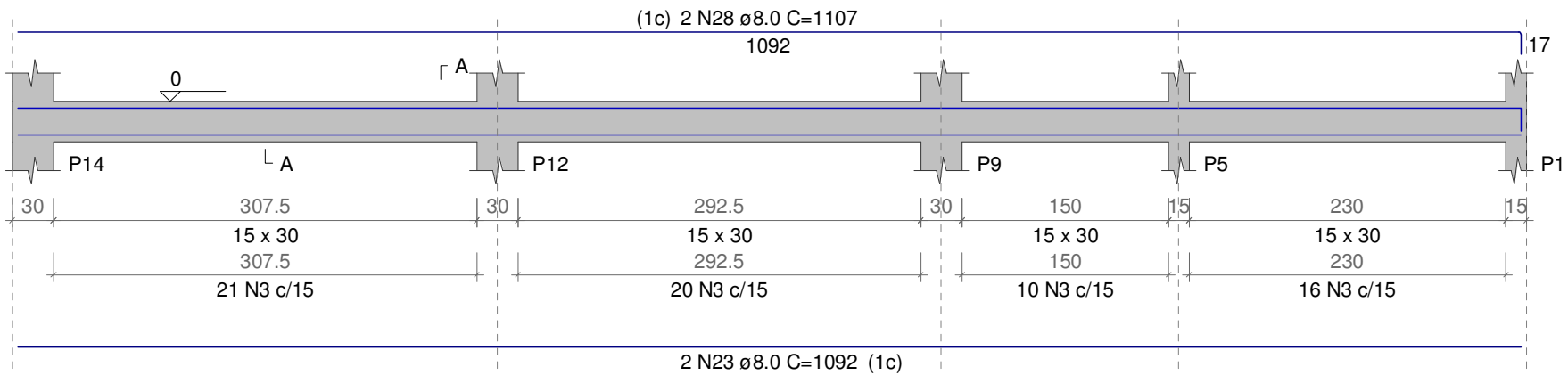
ESC 1:25



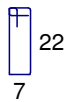
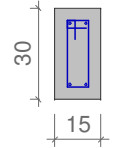
14 N3  $\varnothing$ 5.0 C=69

Estrutural Capela  
baldrame

V6  
ESC 1:50



SEÇÃO A-A  
ESC 1:25

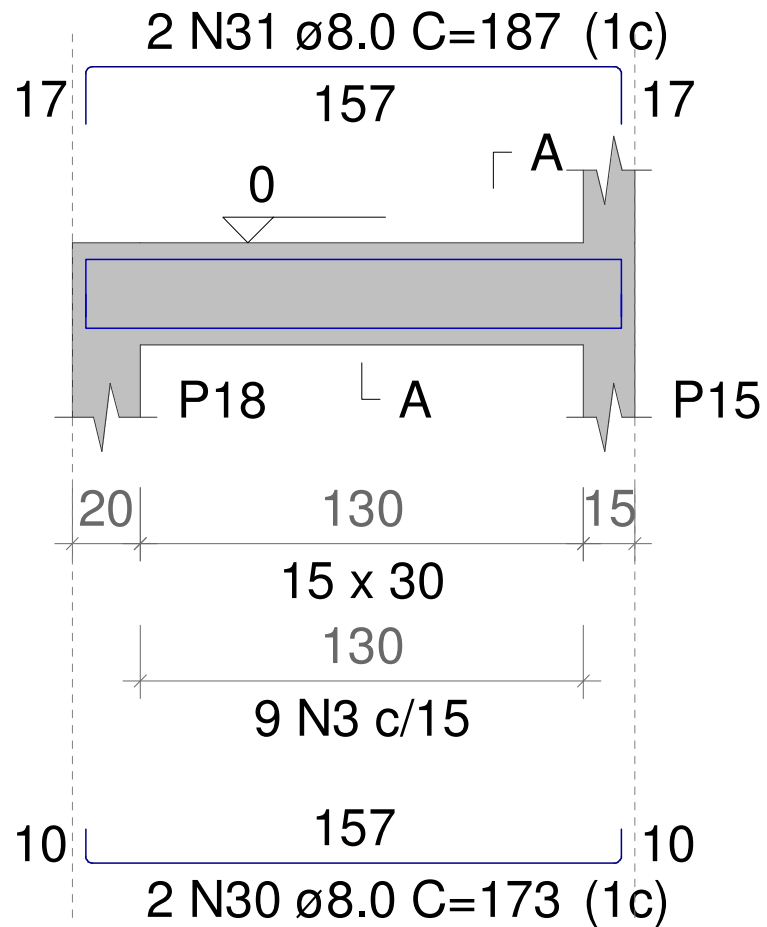


67 N3  $\varnothing 5.0 C=69$

Estrutural Capela  
baldrame

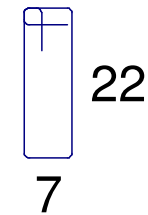
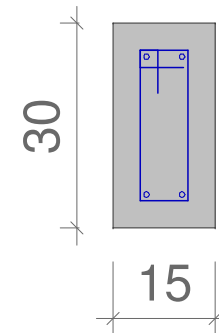
V7

ESC 1:50



SEÇÃO A-A

ESC 1:25



9 N3  $\varnothing$ 5.0 C=69

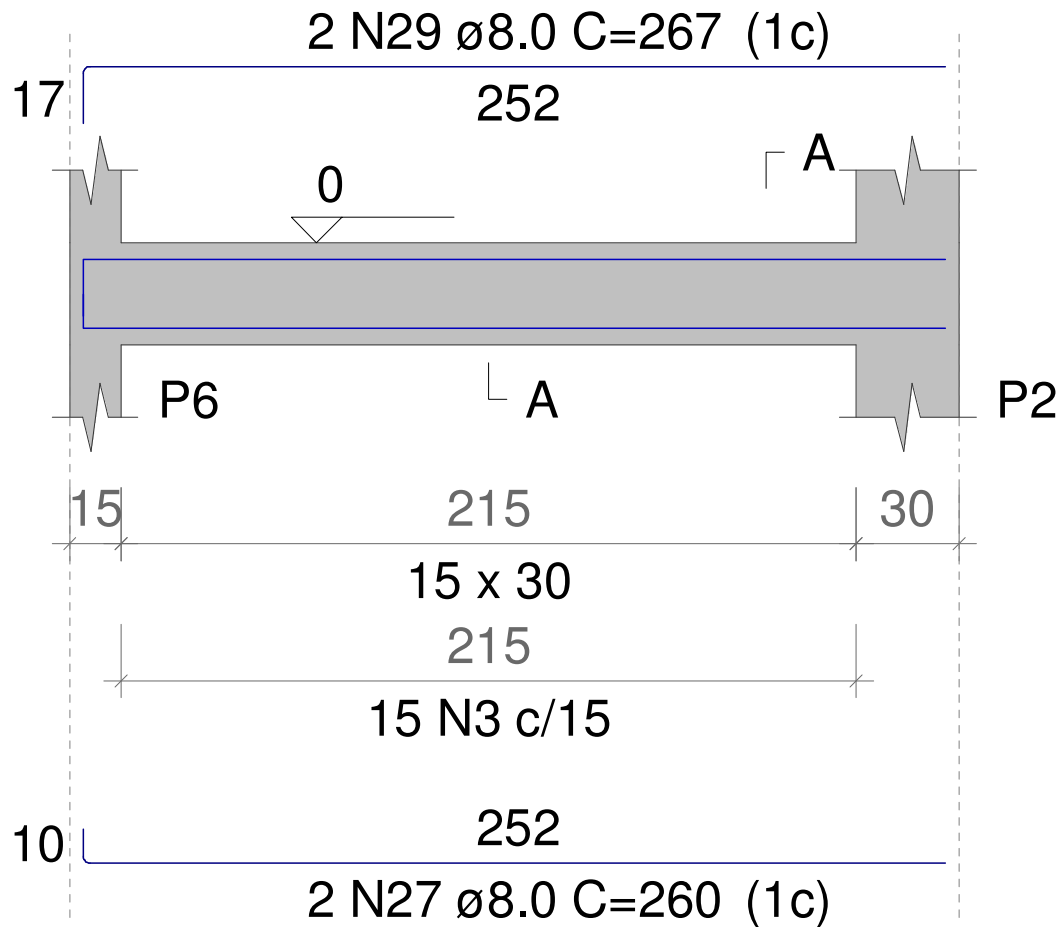


Estrutural Capela

baldrame

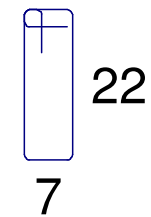
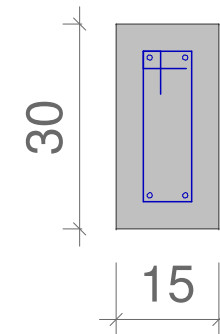
V8

ESC 1:50



SEÇÃO A-A

ESC 1:25

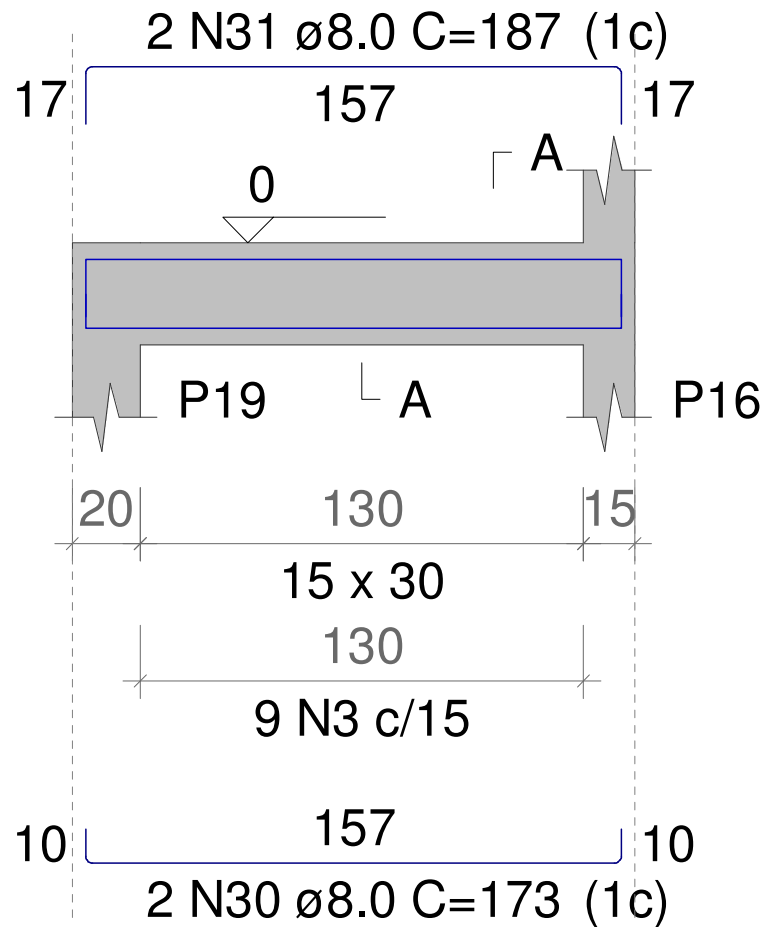


15 N3  $\varnothing$ 5.0 C=69

Estrutural Capela  
baldrame

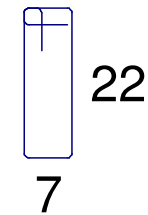
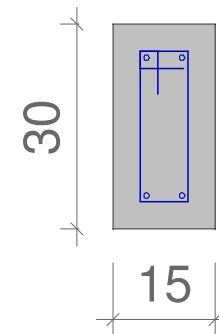
V9

ESC 1:50



SEÇÃO A-A

ESC 1:25



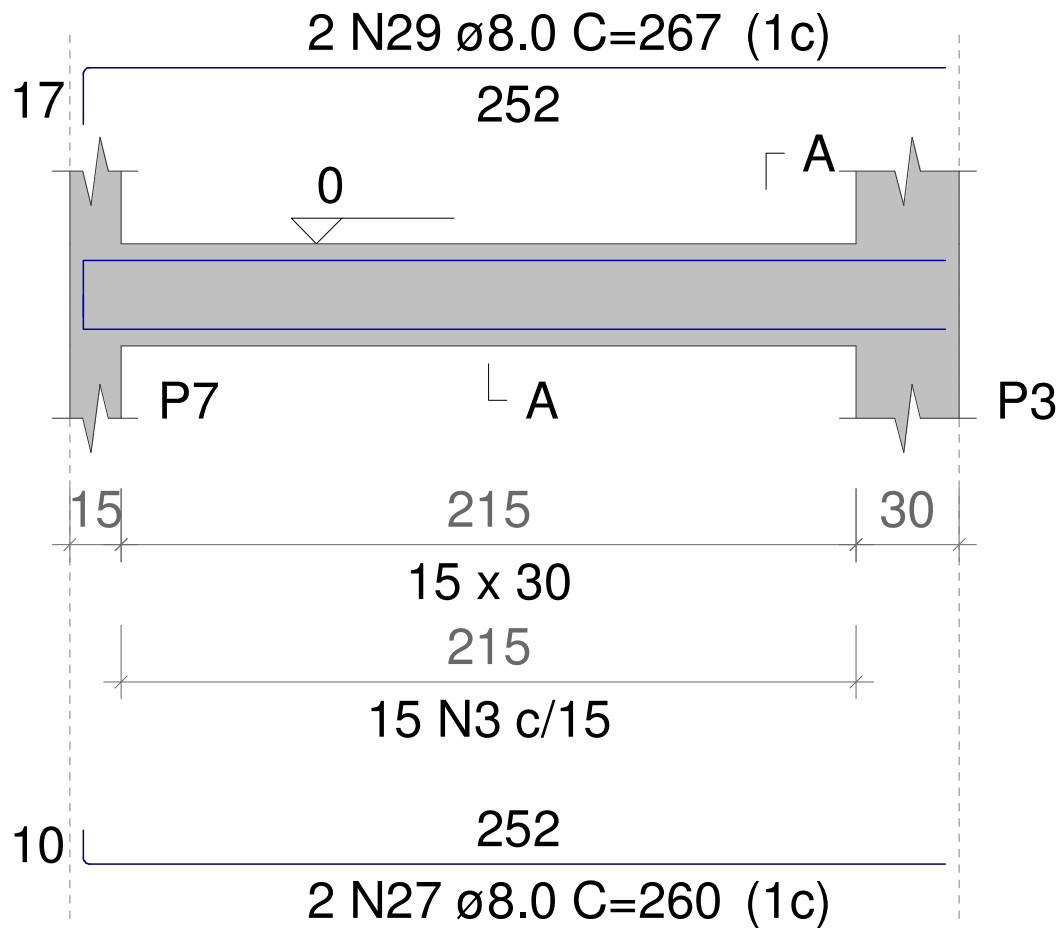
9 N3  $\varnothing$ 5.0 C=69

Estrutural Capela

baldrame

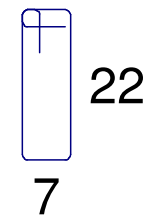
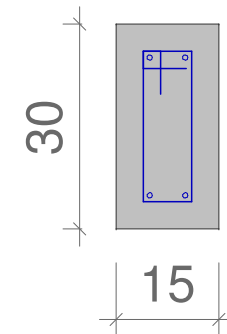
V10

ESC 1:50



SEÇÃO A-A

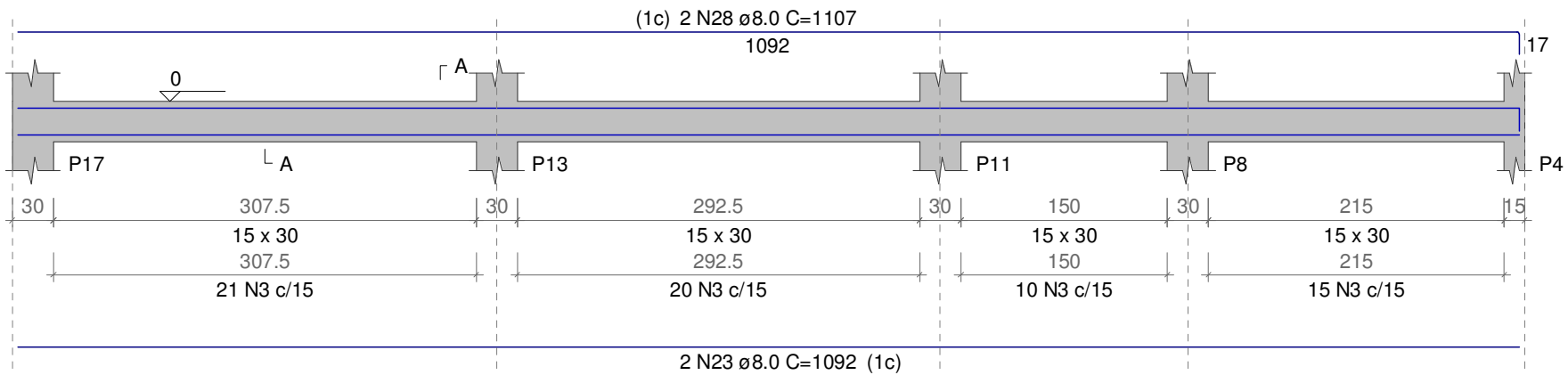
ESC 1:25



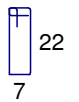
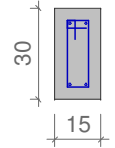
15 N3  $\varnothing$ 5.0 C=69

Estrutural Capela  
baldrame

V11  
ESC 1:50



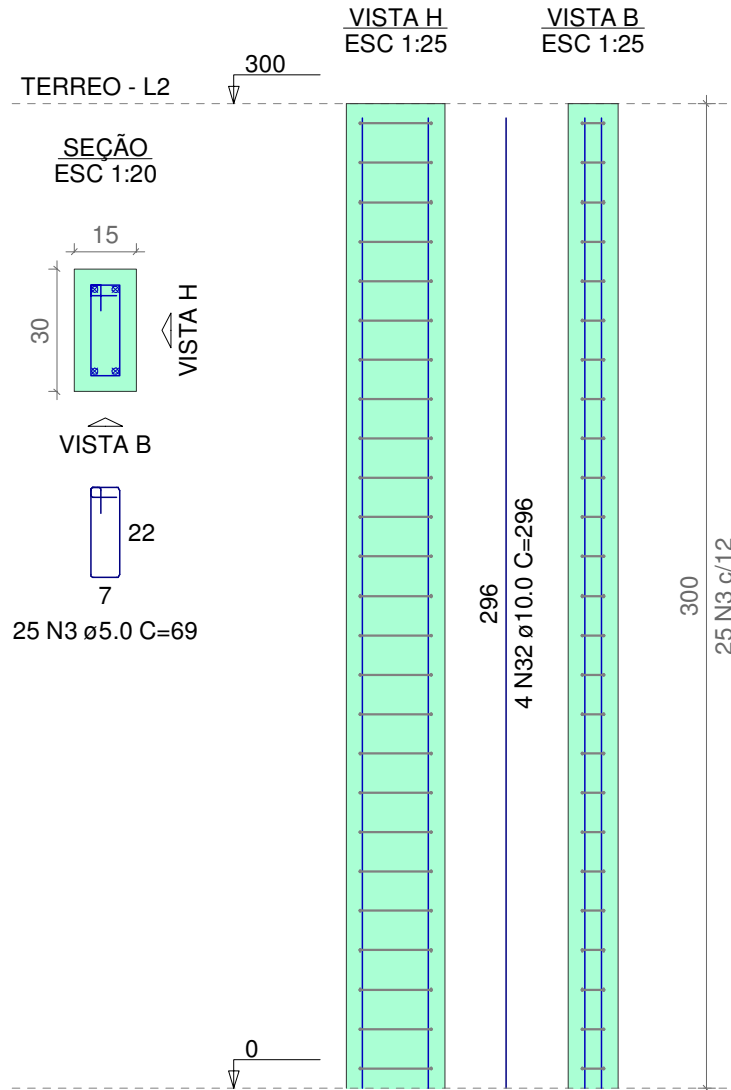
SEÇÃO A-A  
ESC 1:25



66 N3  $\varnothing 5.0 C=69$

Estrutural Capela

P1=P2=P5=P6=P9=P10=  
=P11=P12=P13=P14=  
=P15=P16=P17

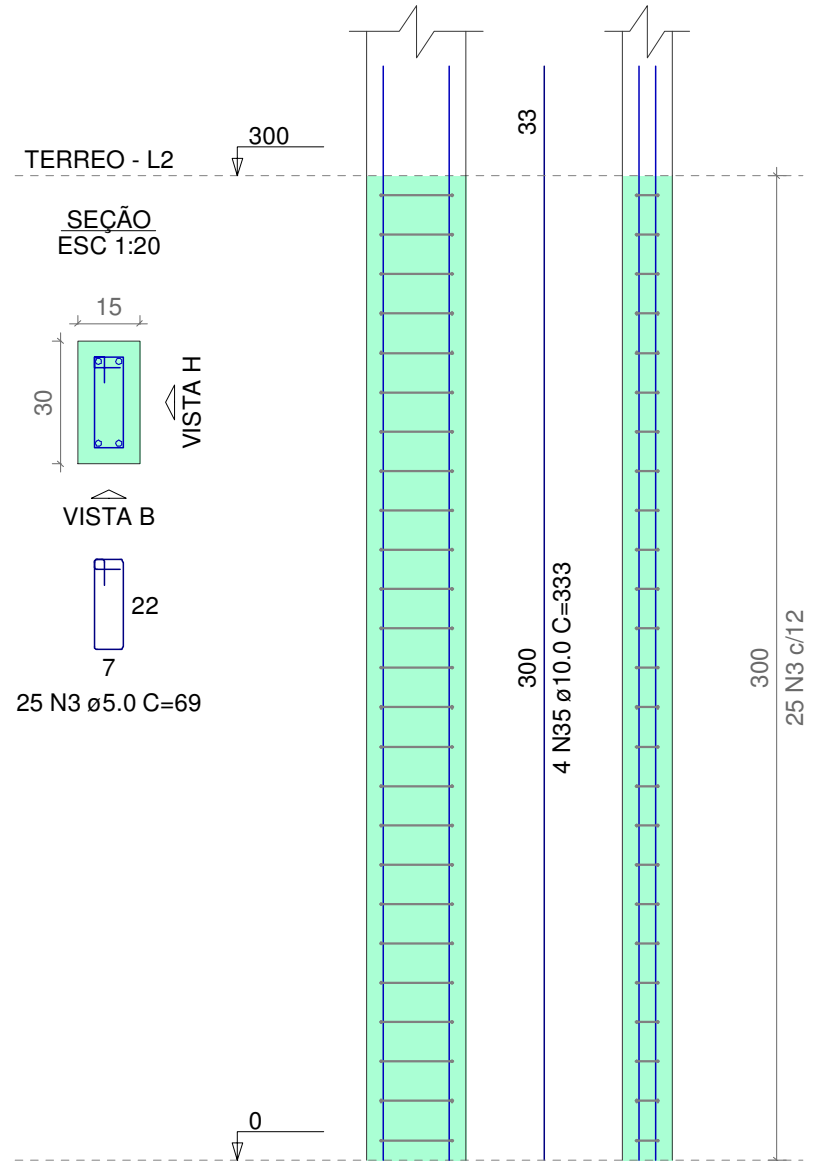


Estrutural Capela

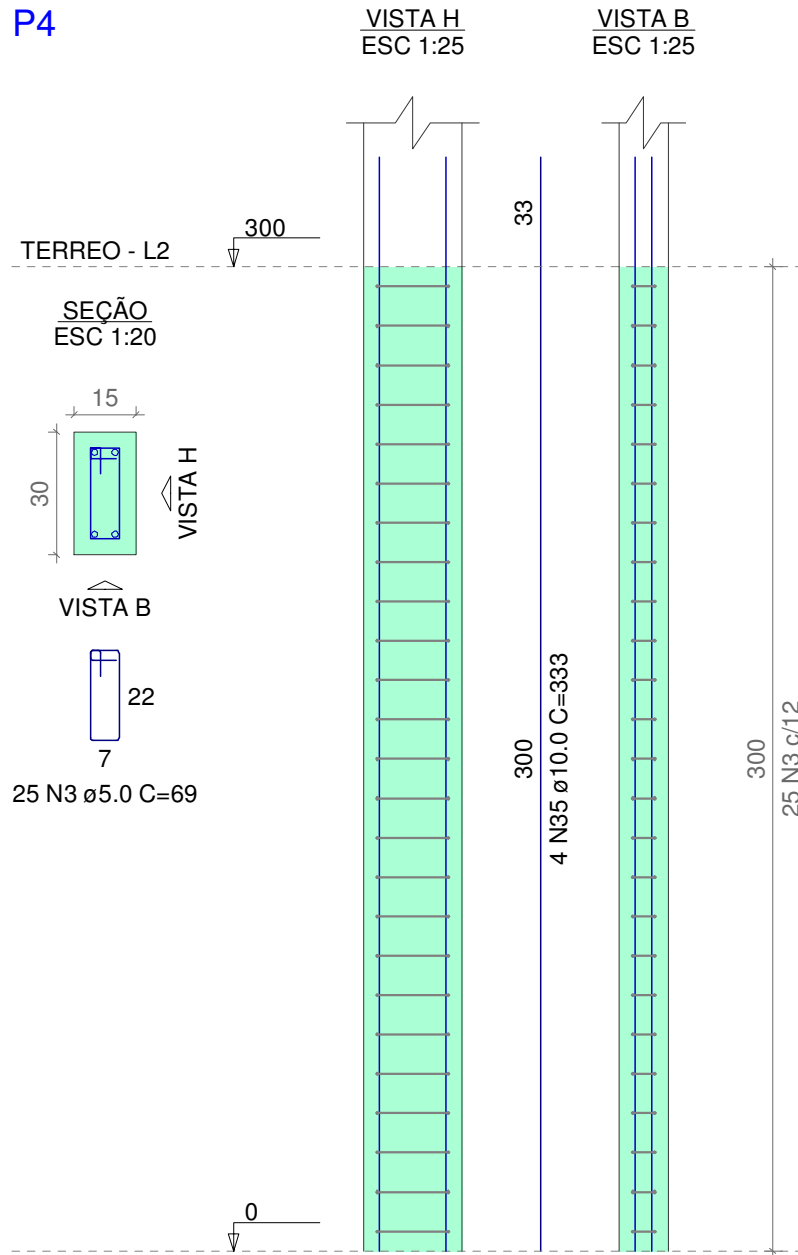
P3

VISTA H ESC 1:25

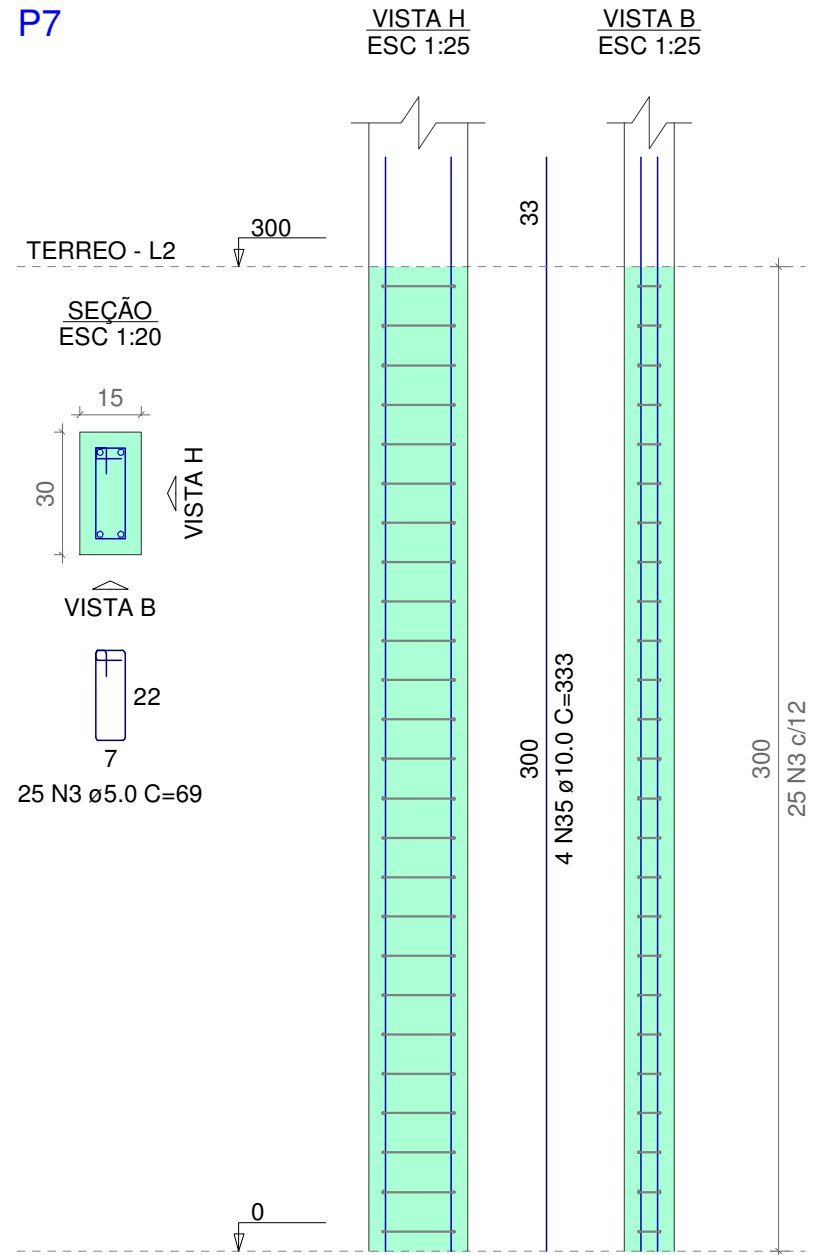
VISTA B ESC 1:25



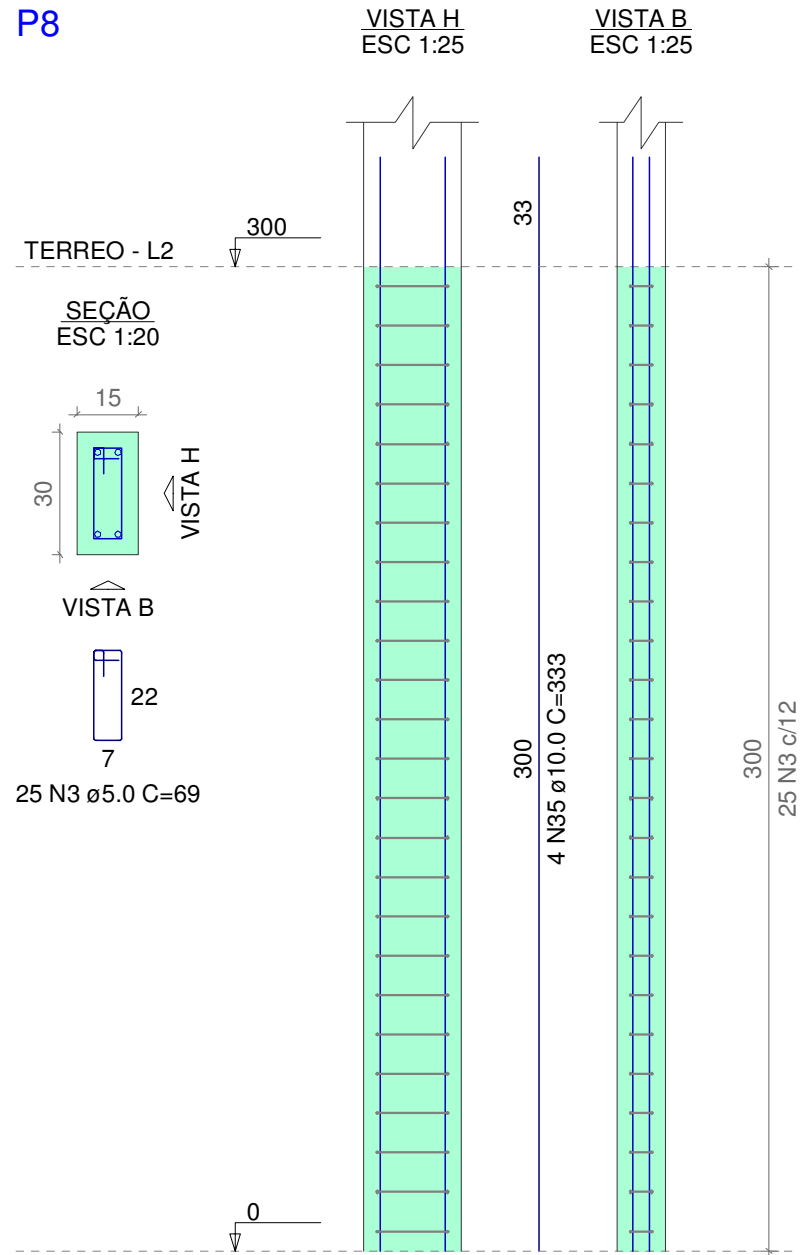
Estrutural Capela  
**P4**

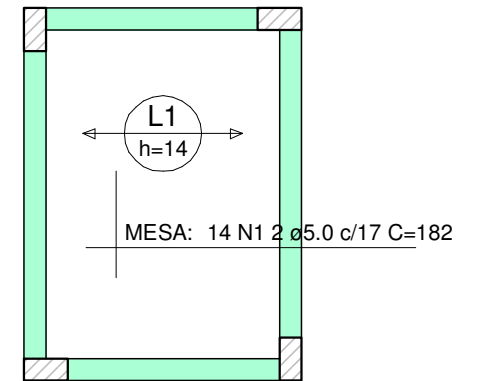


Estrutural Capela  
**P7**



Estrutural Capela  
P8

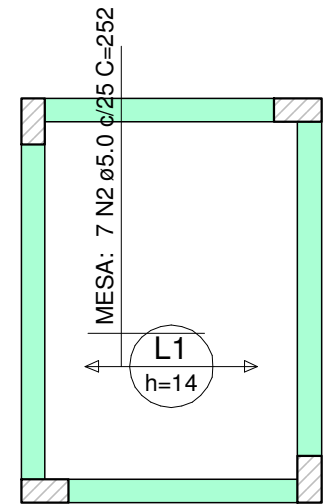




Armação positiva das lajes do pavimento terreo (Eixo X)

escala 1:50





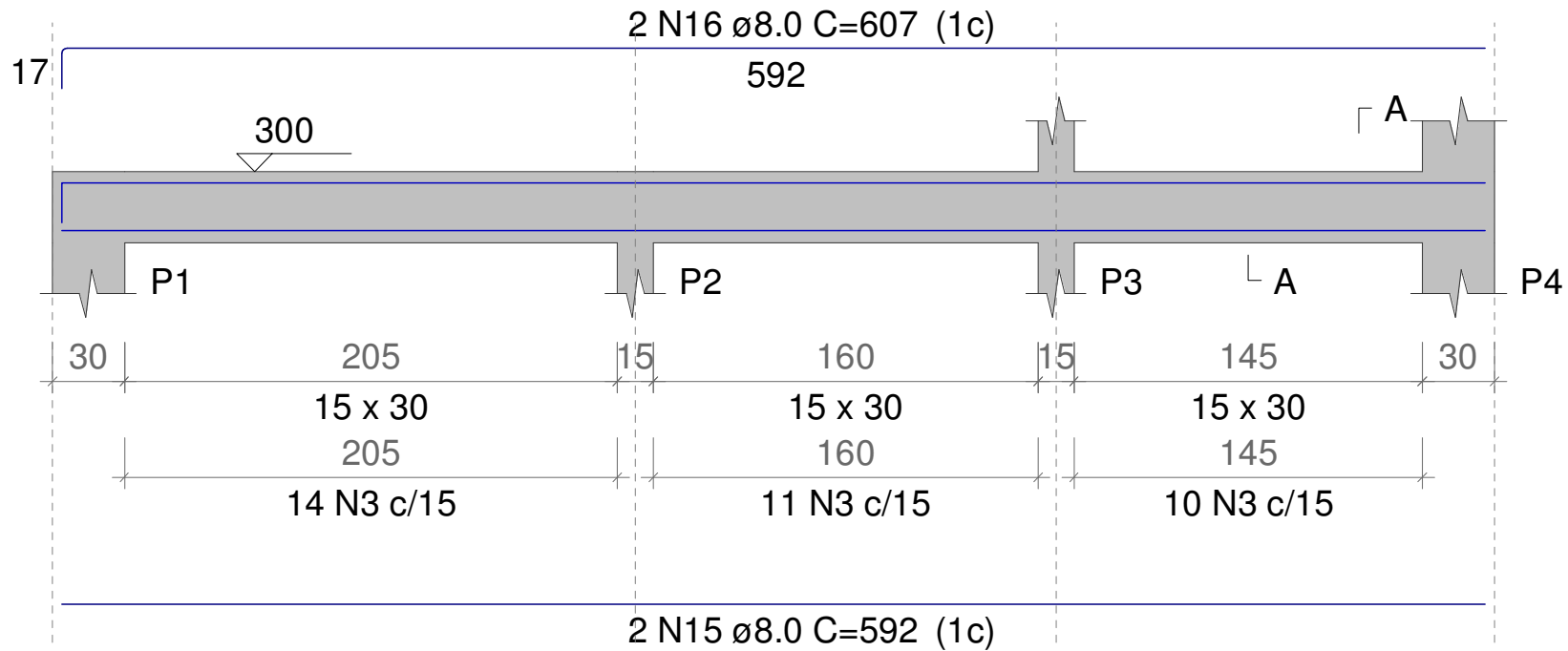
Armação positiva das lajes do pavimento terreo (Eixo Y)

escala 1:50

Estrutural Capela  
terreo

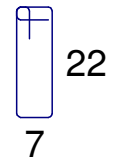
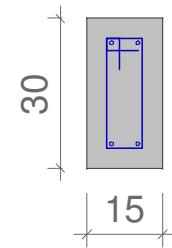
V1

ESC 1:50



SEÇÃO A-A

ESC 1:25



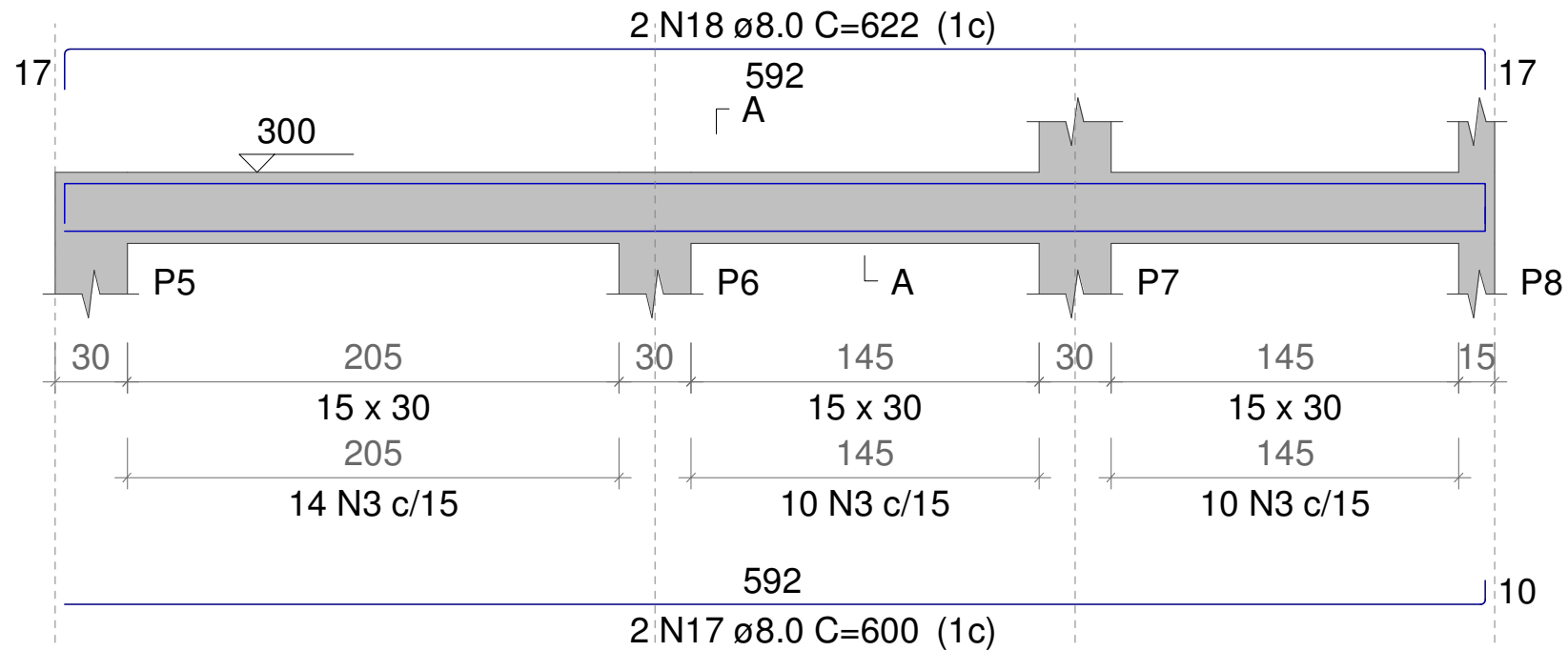
35 N3 ø5.0 C=69

Estrutural Capela

terreo

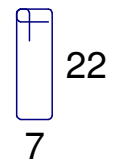
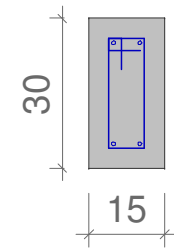
V2

ESC 1:50



SEÇÃO A-A

ESC 1:25



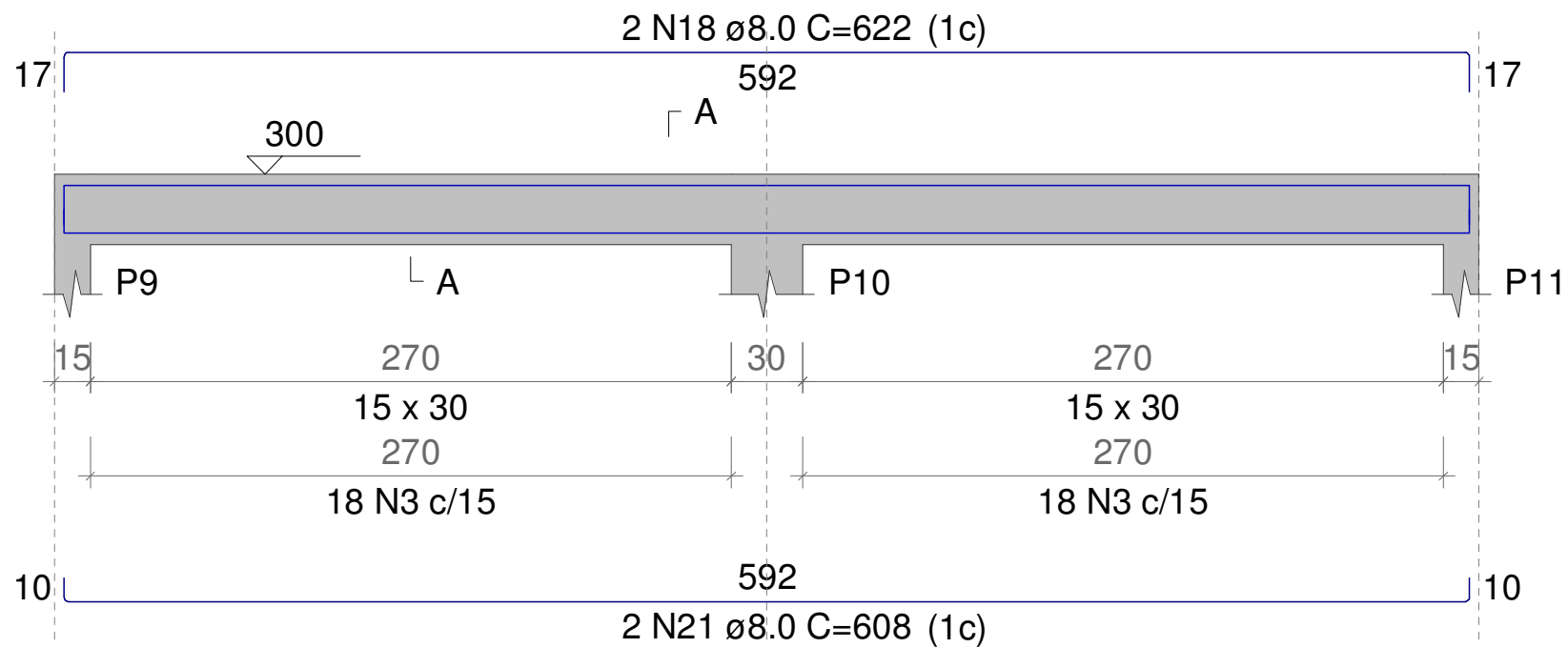
34 N3  $\phi$ 5.0 C=69

Estrutural Capela

terreo

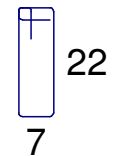
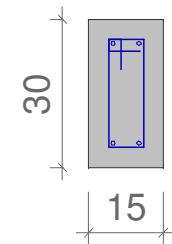
V3

ESC 1:50



SEÇÃO A-A

ESC 1:25



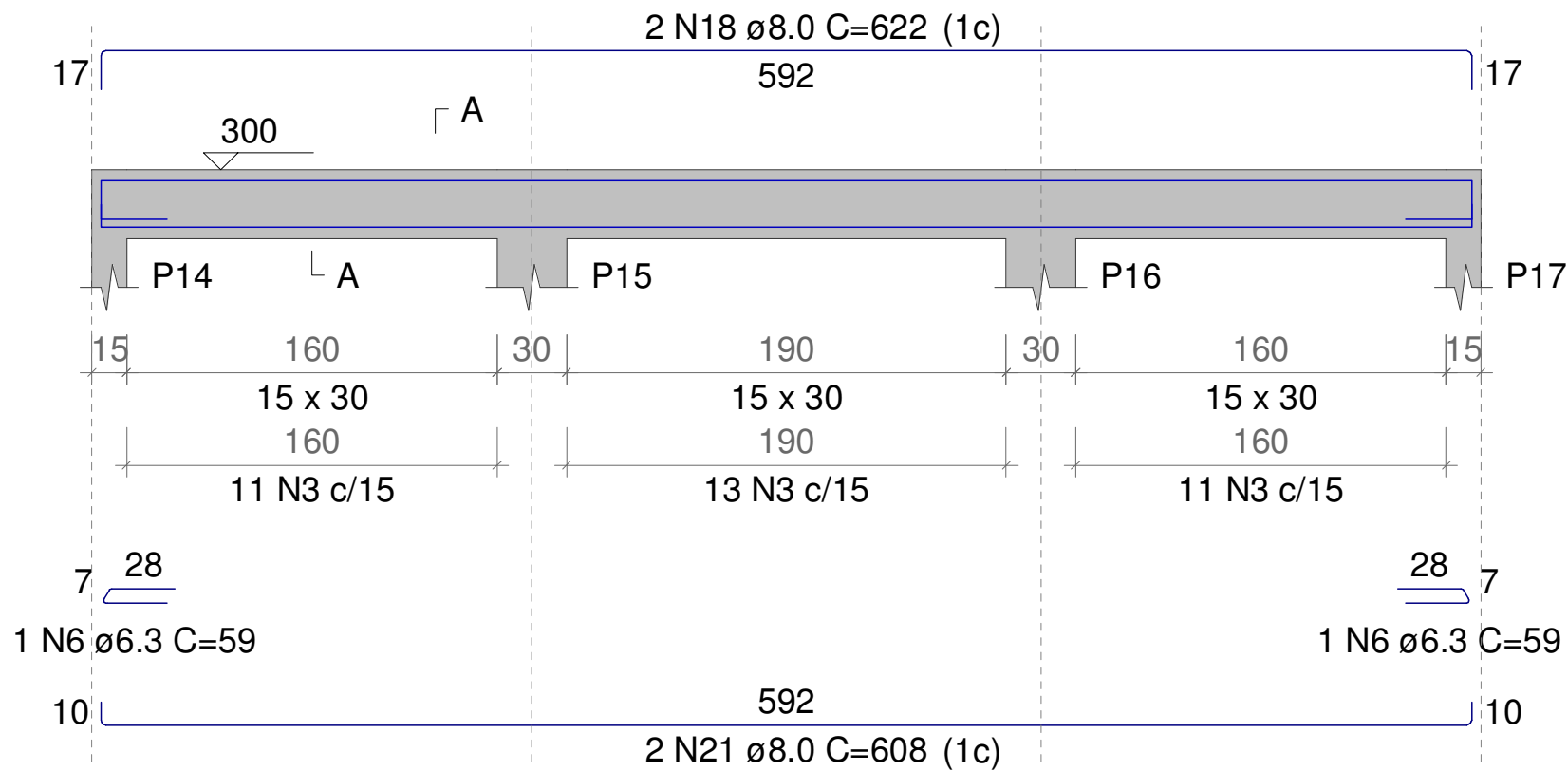
36 N3  $\varnothing$ 5.0 C=69

Estrutural Capela

terreo

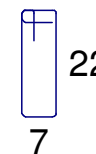
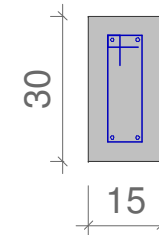
V4

ESC 1:50



SEÇÃO A-A

ESC 1:25

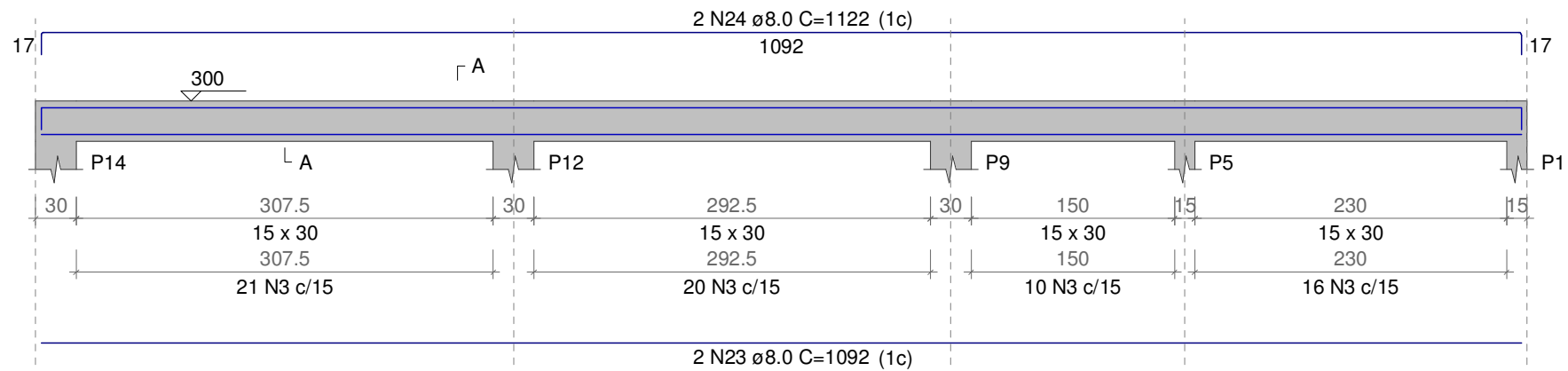


35 N3  $\phi$ 5.0 C=69

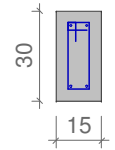
Estrutural Capela  
terreo

V5

ESC 1:50



SEÇÃO A-A  
ESC 1:25



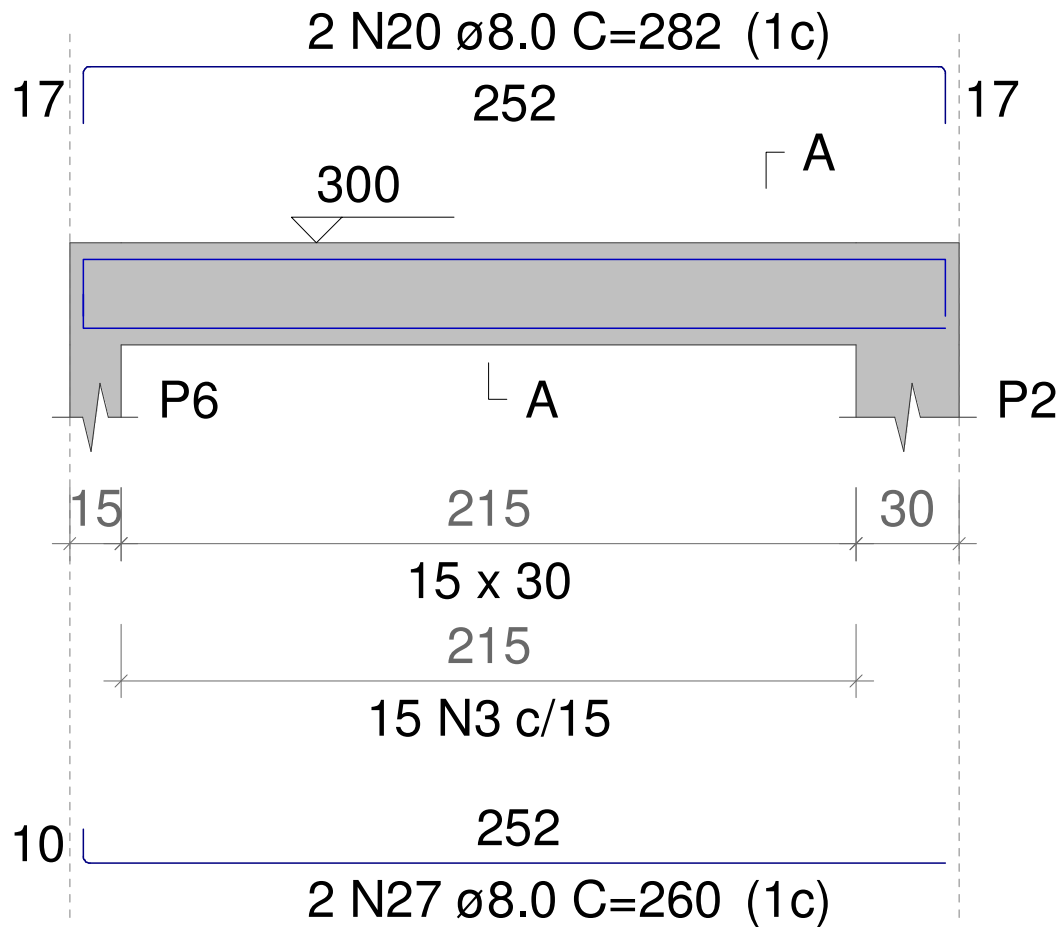
67 N3  $\phi$ 5.0 C=69

Estrutural Capela

terreo

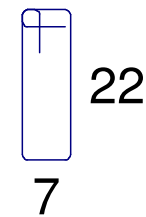
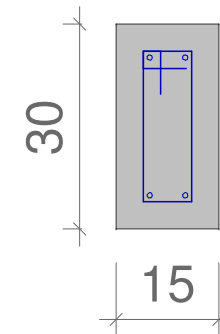
V6

ESC 1:50



SEÇÃO A-A

ESC 1:25



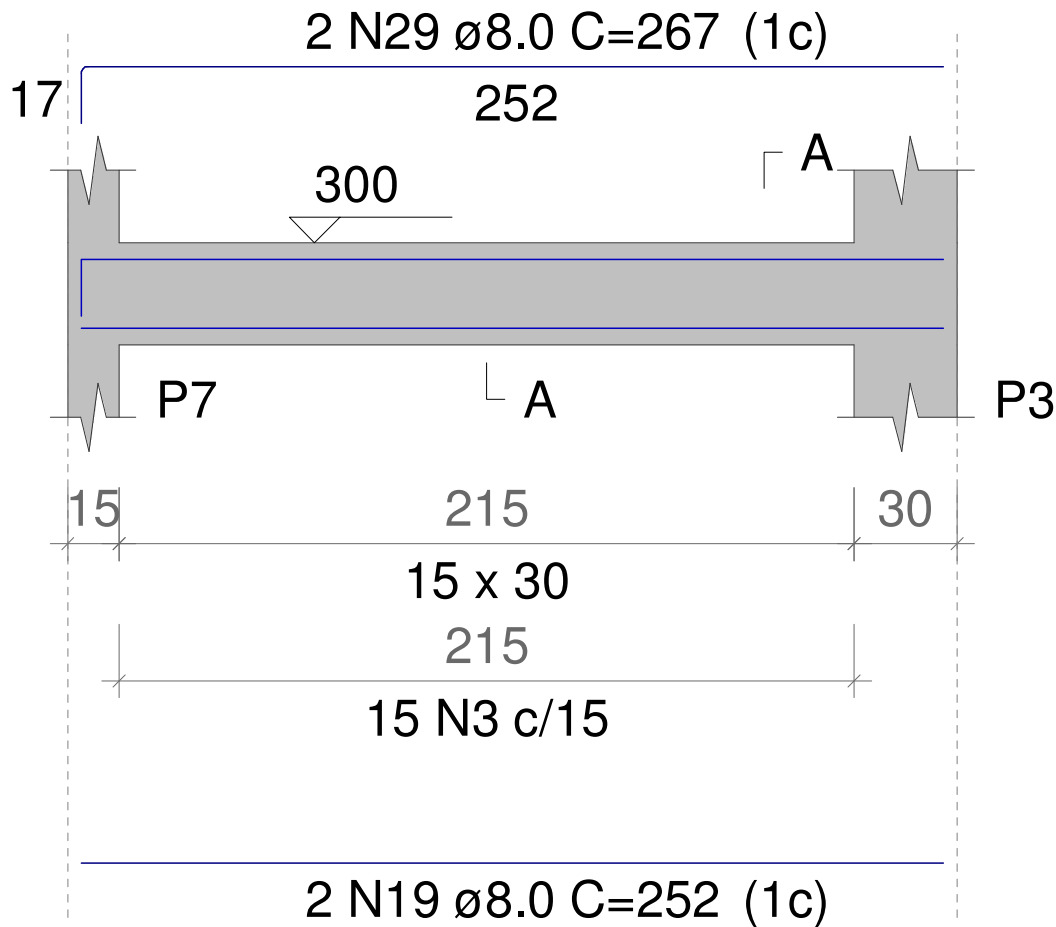
15 N3  $\varnothing$ 5.0 C=69

Estrutural Capela

terreo

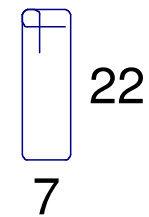
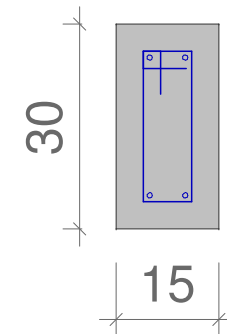
V7

ESC 1:50



SEÇÃO A-A

ESC 1:25



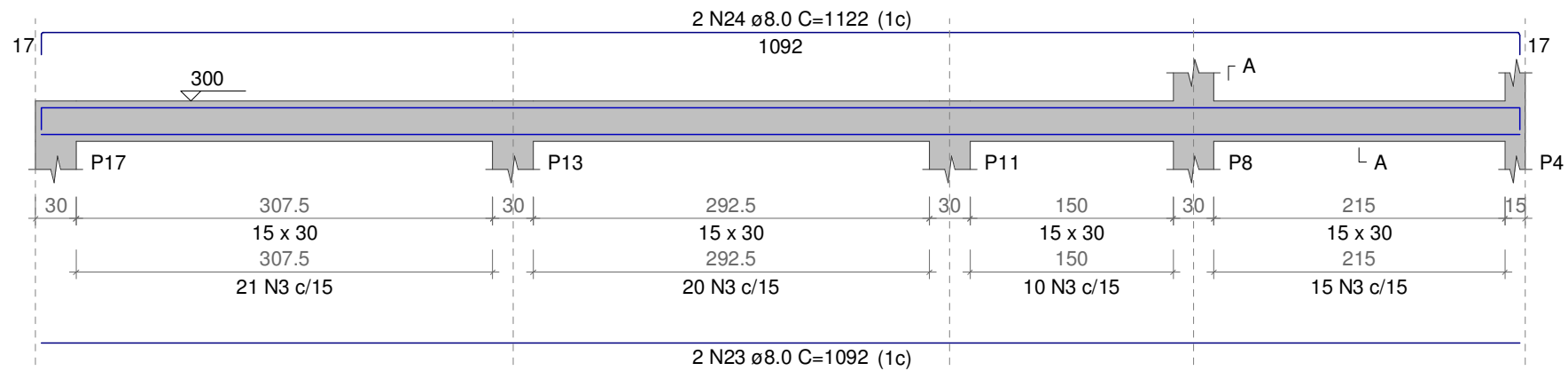
15 N3  $\varnothing$ 5.0 C=69



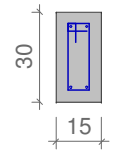
Estrutural Capela  
terreo

V8

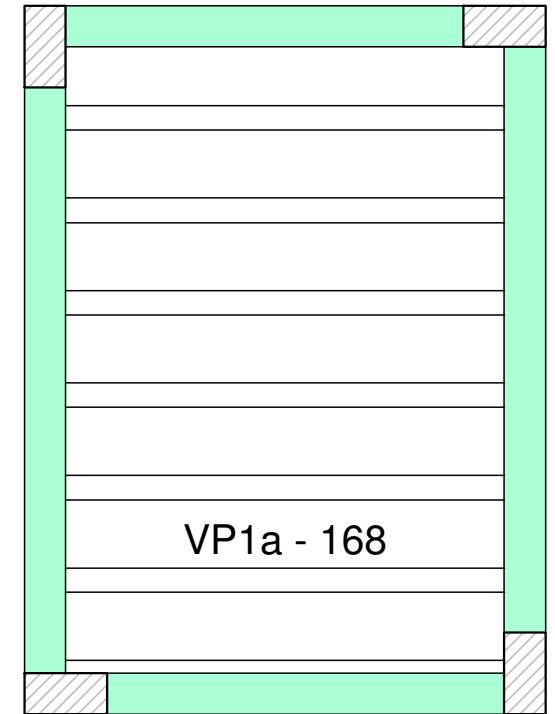
ESC 1:50



SEÇÃO A-A  
ESC 1:25



66 N3  $\phi$ 5.0 C=69

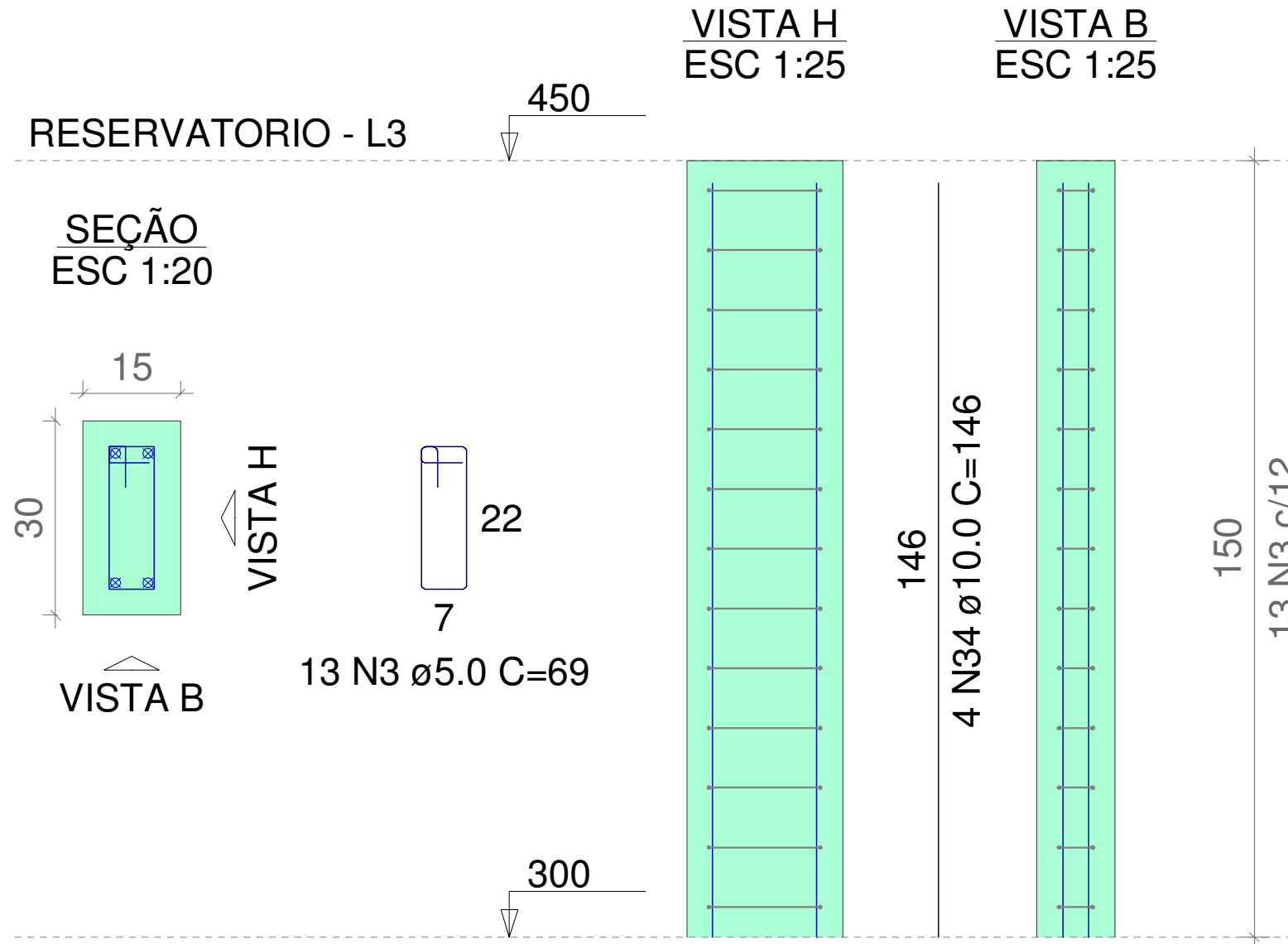


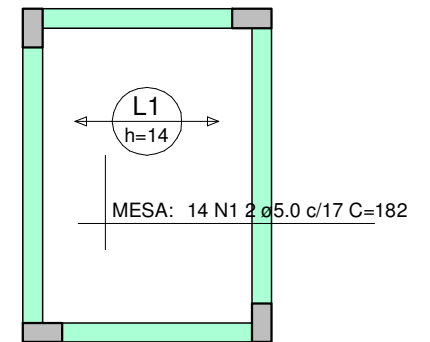
# Planta de vigotas pré-moldadas

escala 1:50

Estrutural Capela

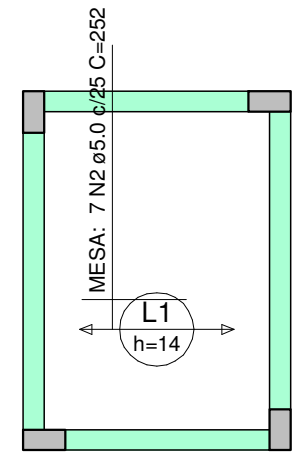
P3=P4=P7=P8





## Armação positiva das lajes do pavimento Reservatorio (Eixo X)

escala 1:50



Armação positiva das lajes do pavimento Reservatorio (Eixo Y)

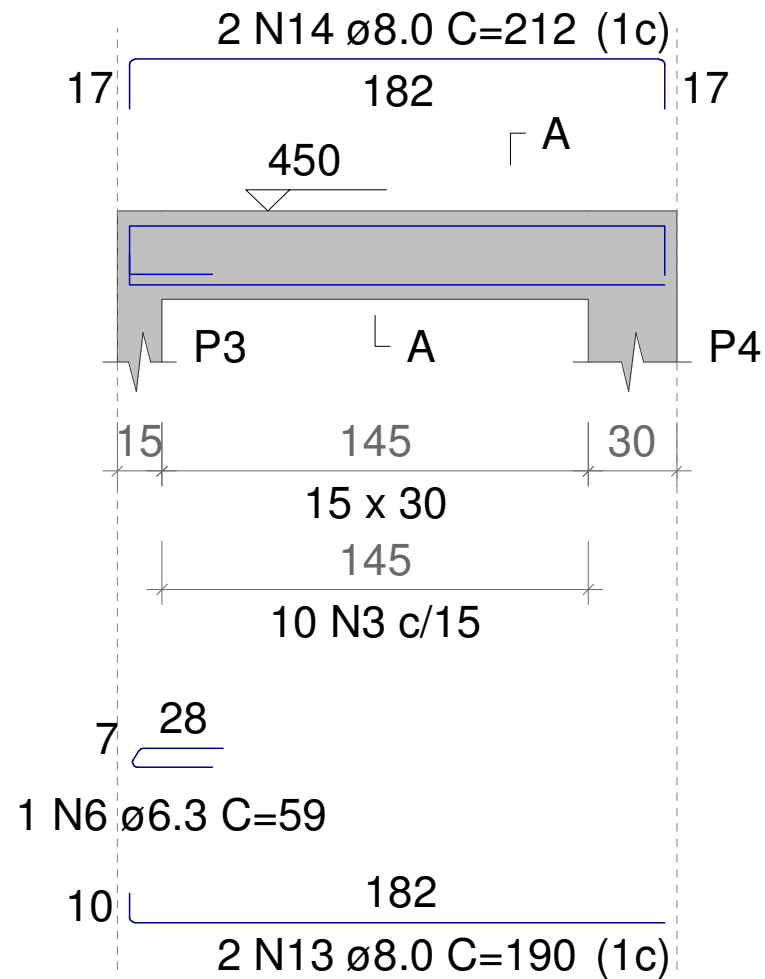
escala 1:50

Estrutural Capela

Reservatorio

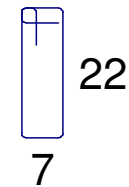
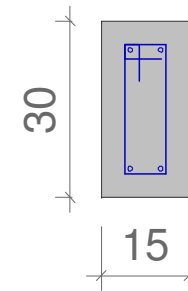
V1

ESC 1:50



SEÇÃO A-A

ESC 1:25



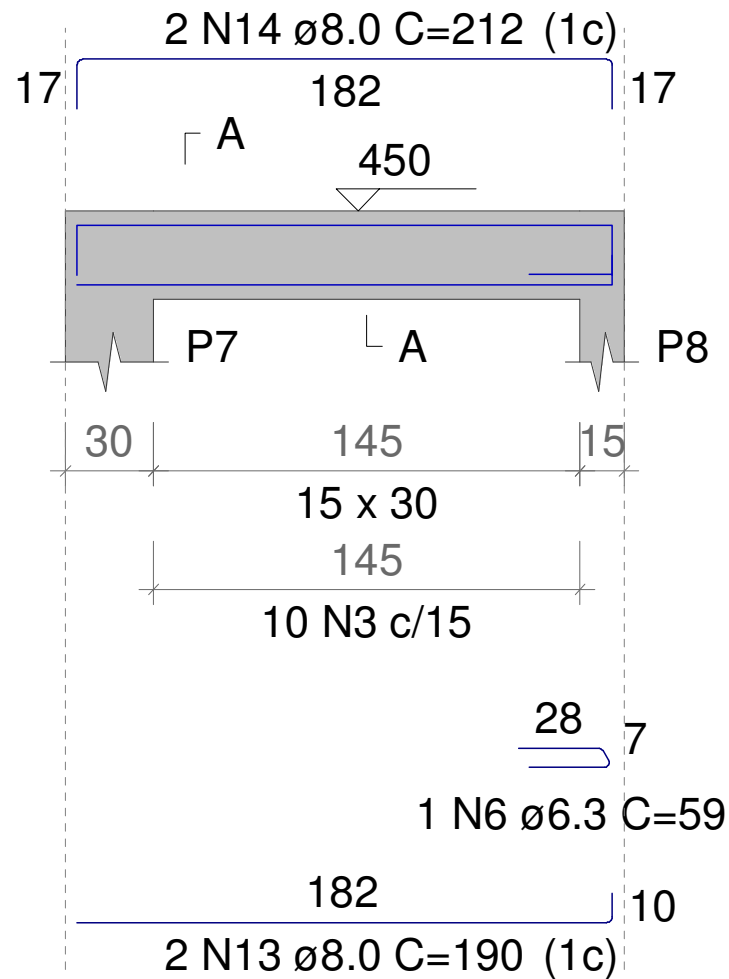
10 N3  $\varnothing$ 5.0 C=69

Estrutural Capela

Reservatorio

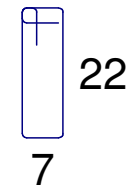
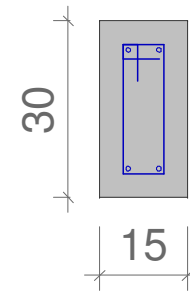
V2

ESC 1:50



SEÇÃO A-A

ESC 1:25



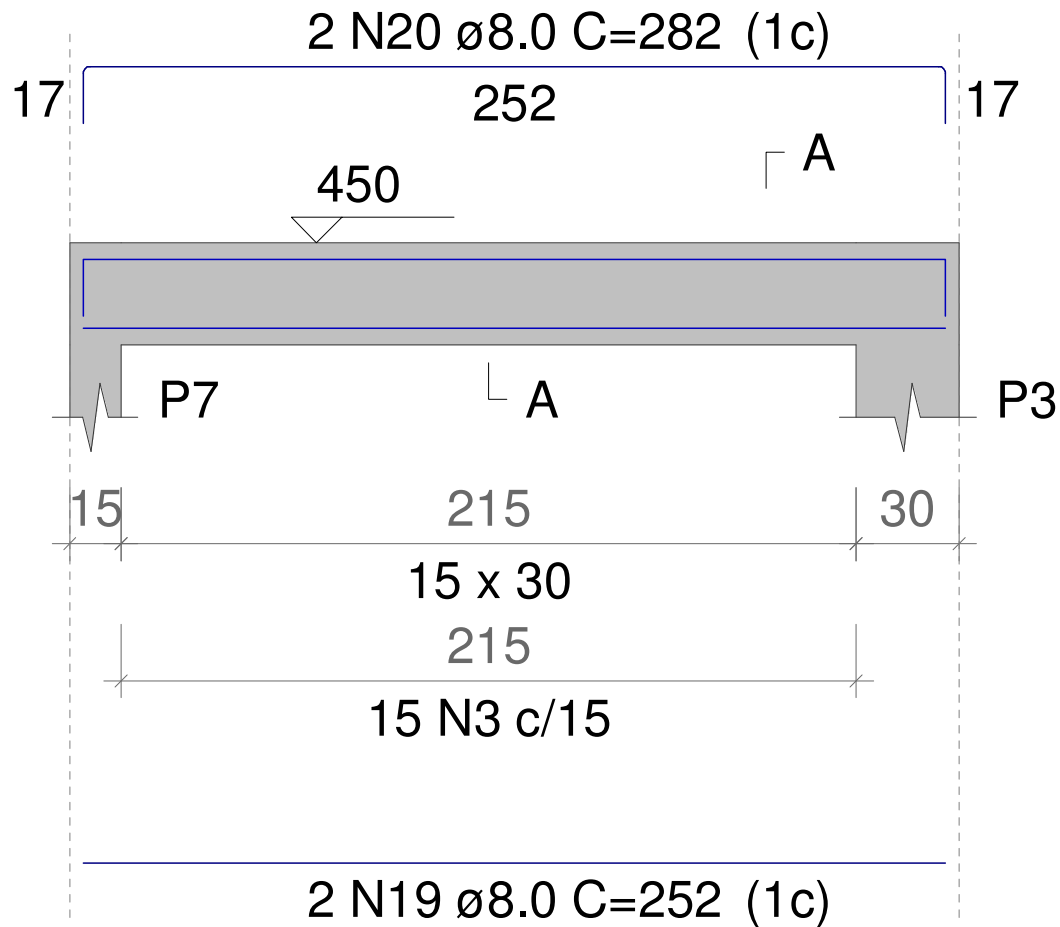
10 N3  $\varnothing$ 5.0 C=69

Estrutural Capela

Reservatorio

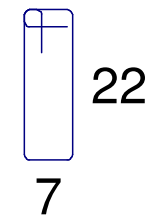
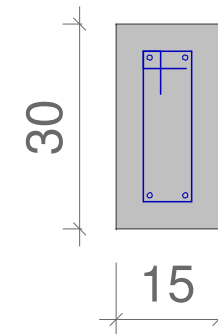
V3

ESC 1:50



SEÇÃO A-A

ESC 1:25



15 N3  $\varnothing$ 5.0 C=69

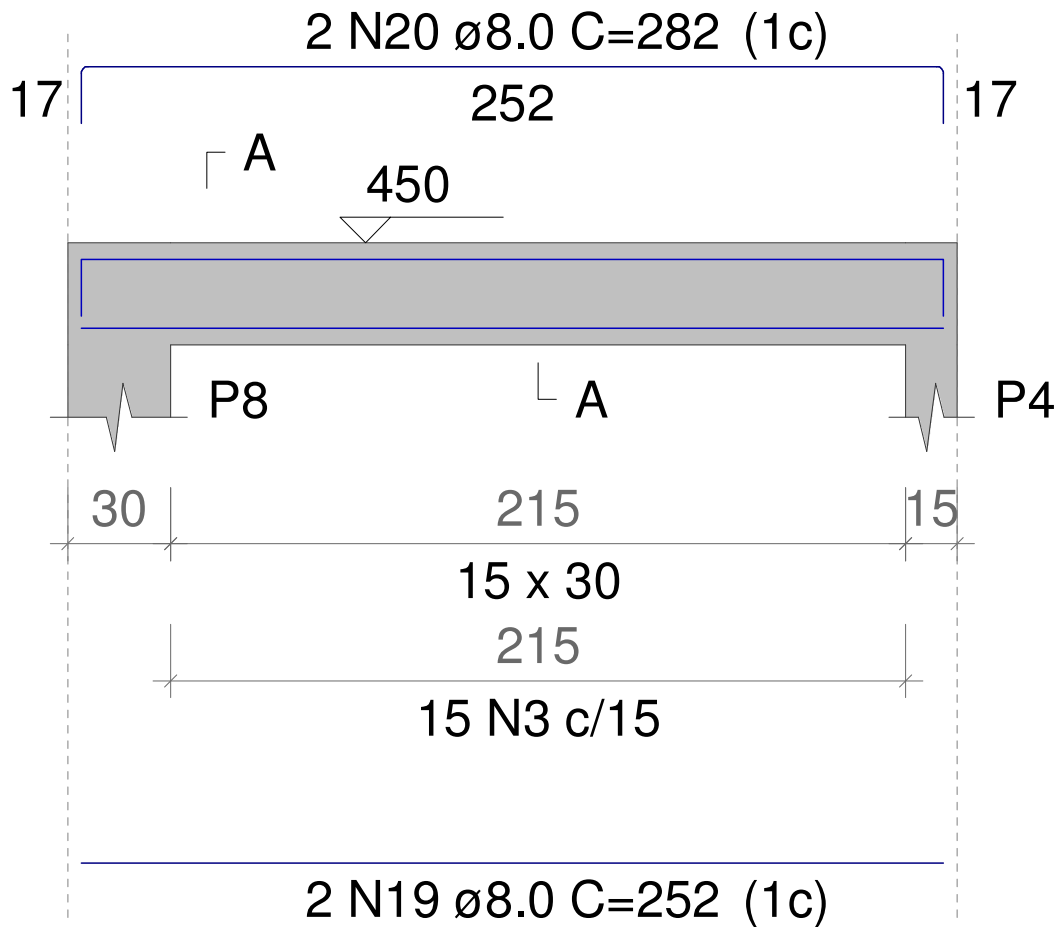


Estrutural Capela

Reservatorio

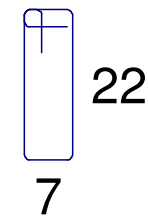
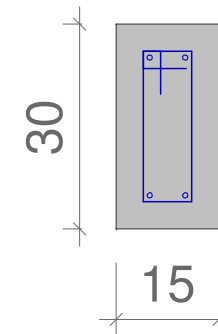
V4

ESC 1:50

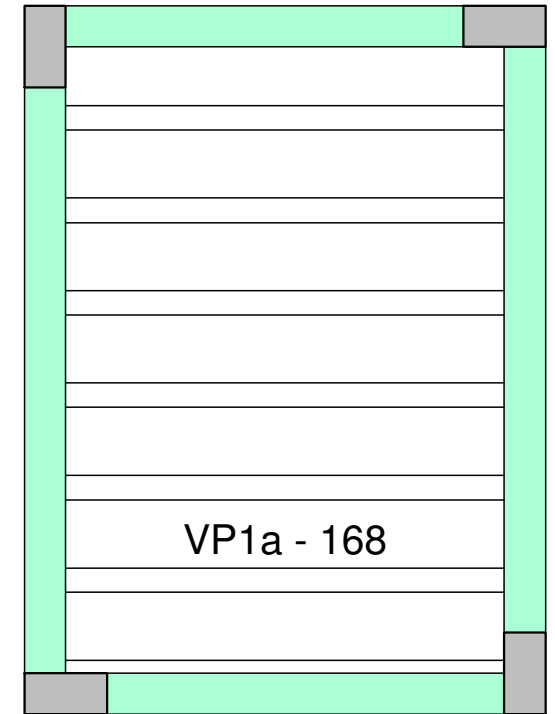


SEÇÃO A-A

ESC 1:25



15 N3  $\varnothing$ 5.0 C=69



# Planta de vigotas pré-moldadas

escala 1:50

## RESUMO DO AÇO

AÇO	DIAM (mm)	C.TOTAL (m)	QUANT + 10% (Barras)	PESO + 10% (kg)
CA50	6.3	3.5	1	1
	8.0	755.4	70	327.9
	10.0	377.2	35	255.8
CA60	5.0	1048	-	177.7
<b>PESO TOTAL</b> (kg)				
CA50	584.7			
CA60	177.7			

Volume de concreto (C-25) = 8.03 m<sup>3</sup>

Volume de concreto (C-30) = 3.58 m<sup>3</sup>

Área de forma = 157.22 m<sup>2</sup>